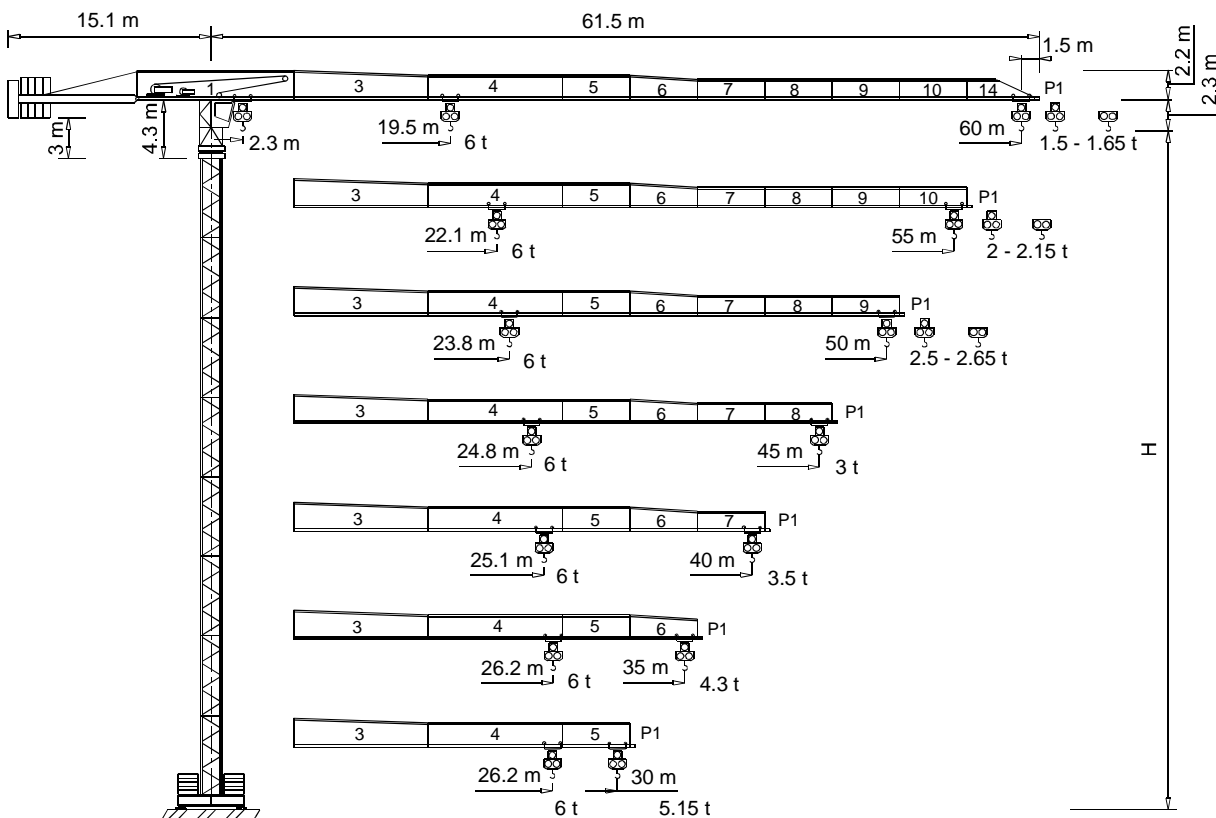


### Gru a torre "Flat Top"

"Flat Top" Tower Crane • Grue à tour "Flat Top"  
 "Flat Top" Turmdrehkran • Grua torre "Flat Top"



CE FEM 1.001 A3  
(A2 )

THE **ULTIMATE CRANE**™

Dati illustrativi non impegnativi  
 Con riserva di modifica senza preavviso

Specifications and data not binding  
 Subject to modification without notice

Données techniques seulement indicatives  
 Modifications réservées sans préavis

Angaben und Beschreibung unverbindlich  
 Änderungen vorbehalten ohne weitere Mitteilung

Dibujos y datos sin compromiso  
 Modificaciones reservadas sin preaviso

UTE.DOC.REV.002 09\_2002

"CITY" CTT 141-6 TS



# CTT 141-6

**Diagramma di portata**  
**Load Diagram**

**I**  
**GB**

**Curbes de charges**  
**Lastkurven**

**F**  
**D**

**Curvas de cargas**

**E**

		CTT 141-6											
		10	15	20	25	30	35	40	45	50	55	60	
3 t	- 36.8 m	3	3	3	3	3	3	2.72	2.36	2.08	1.84	1.65	
3 t	- 35.2 m	3	3	3	3	3	3	2.56	2.21	1.92	1.69	1.5	
6 t	- 19.51 m	6	6	5.83	4.51	3.64	3.02	2.56	2.21	1.92	1.69	1.5	
3 t	- 41.63 m	3	3	3	3	3	3	3	2.74	2.41	2.15		
3 t	- 39.86 m	3	3	3	3	3	3	2.99	2.58	2.26	2		
6 t	- 22.05 m	6	6	6	5.2	4.21	3.51	2.99	2.58	2.26	2		
3 t	- 45 m	3	3	3	3	3	3	3	3	2.65			
3 t	- 43.13 m	3	3	3	3	3	3	3	3	2.85	2.5		
6 t	- 23.83 m	6	6	6	5.68	4.61	3.85	3.29	2.85	2.5			
3 t	- 45 m	3	3	3	3	3	3	3	3				
6 t	- 24.85 m	6	6	6	5.96	4.84	4.05	3.46	3				
3 t	- 40 m	3	3	3	3	3	3	3					
6 t	- 25.11 m	6	6	6	6	4.9	4.1	3.5					
3 t	- 35 m	3	3	3	3	3	3						
6 t	- 26.16 m	6	6	6	6	5.14	4.3						
3 t	- 30 m	3	3	3	3	3							
6 t	- 26.23 m	6	6	6	6	5.15							

**Altre installazioni**  
**Other configurations**

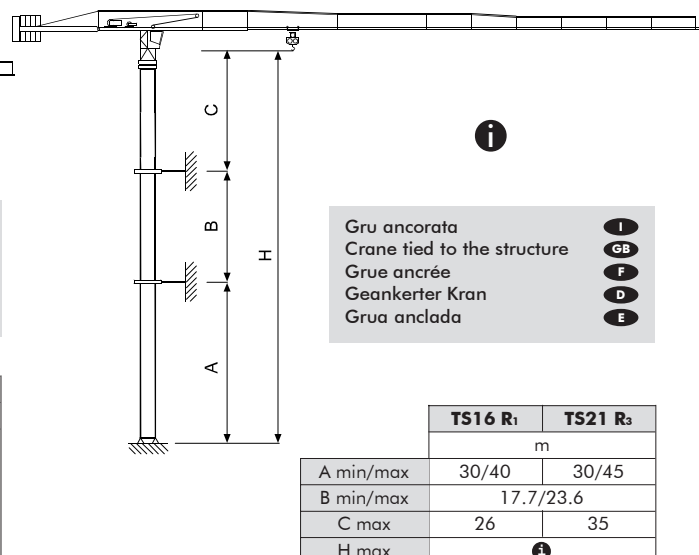
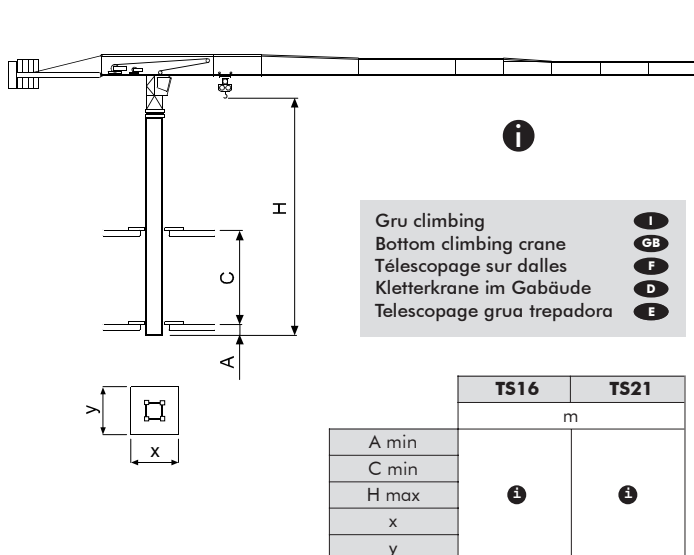
**I**  
**GB**

**Autres implantations**  
**Aufstellmöglichkeiten**

**F**  
**D**

**Otras implantaciones**

**E**



**I** Consultateci

**I** Consult us

**GB** Nous consulter

**F** Consultarnos

**E** Auf Anfrage

**D**



# CTT 141-6

Torre  
Mast



Mât  
Turm



Mástil



**I** Le prolunghe TS sono disponibili in lunghezze 11.8 m, 5.9 m, 2.95 m.

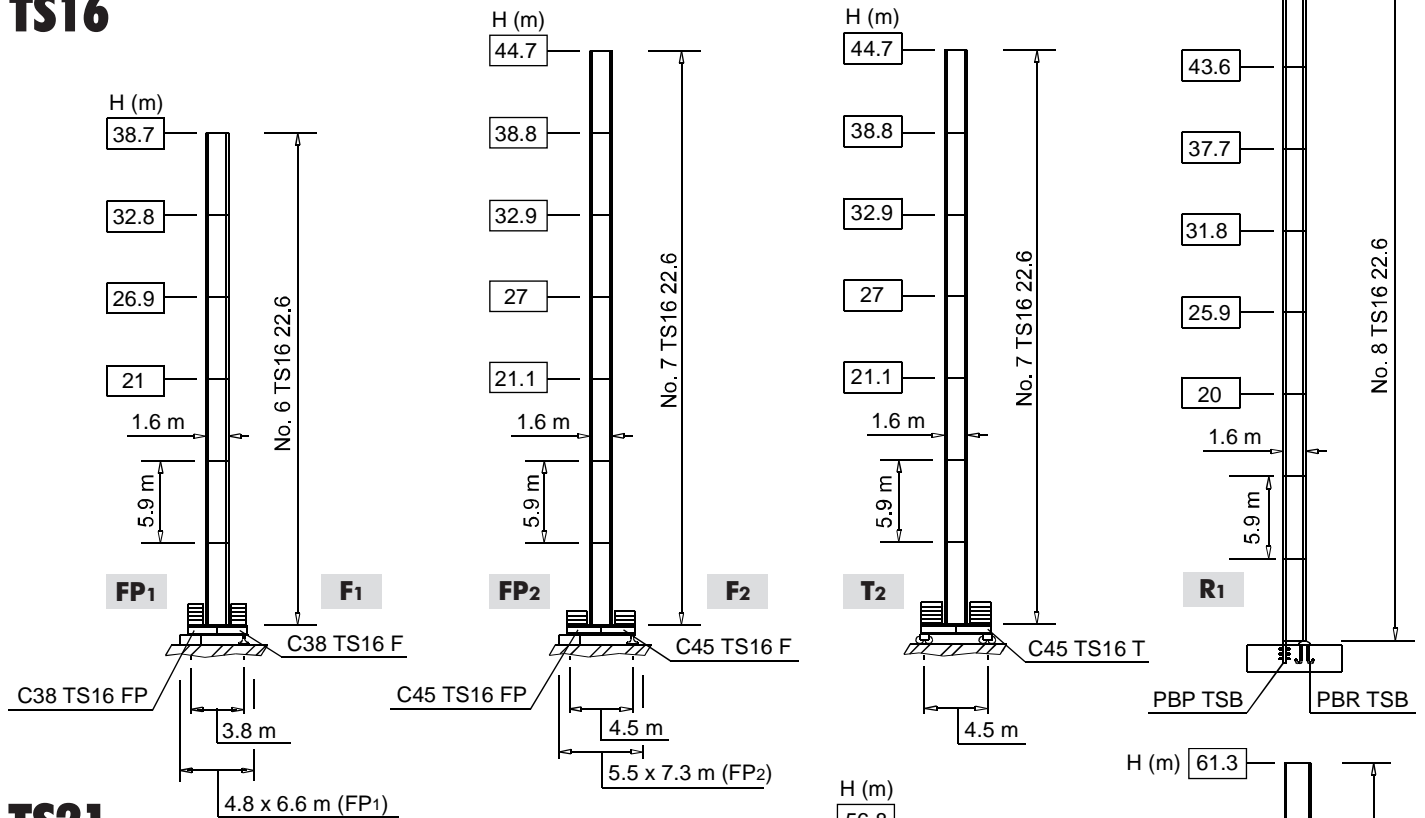
**F** Les éléments de mât TS sont disponibles en longueur 11.8 m, 5.9 m, 2.95 m.

**E** Los tramos de torre TS son disponibles en las medidas de largo 11.8 m, 5.9 m, 2.95 m.

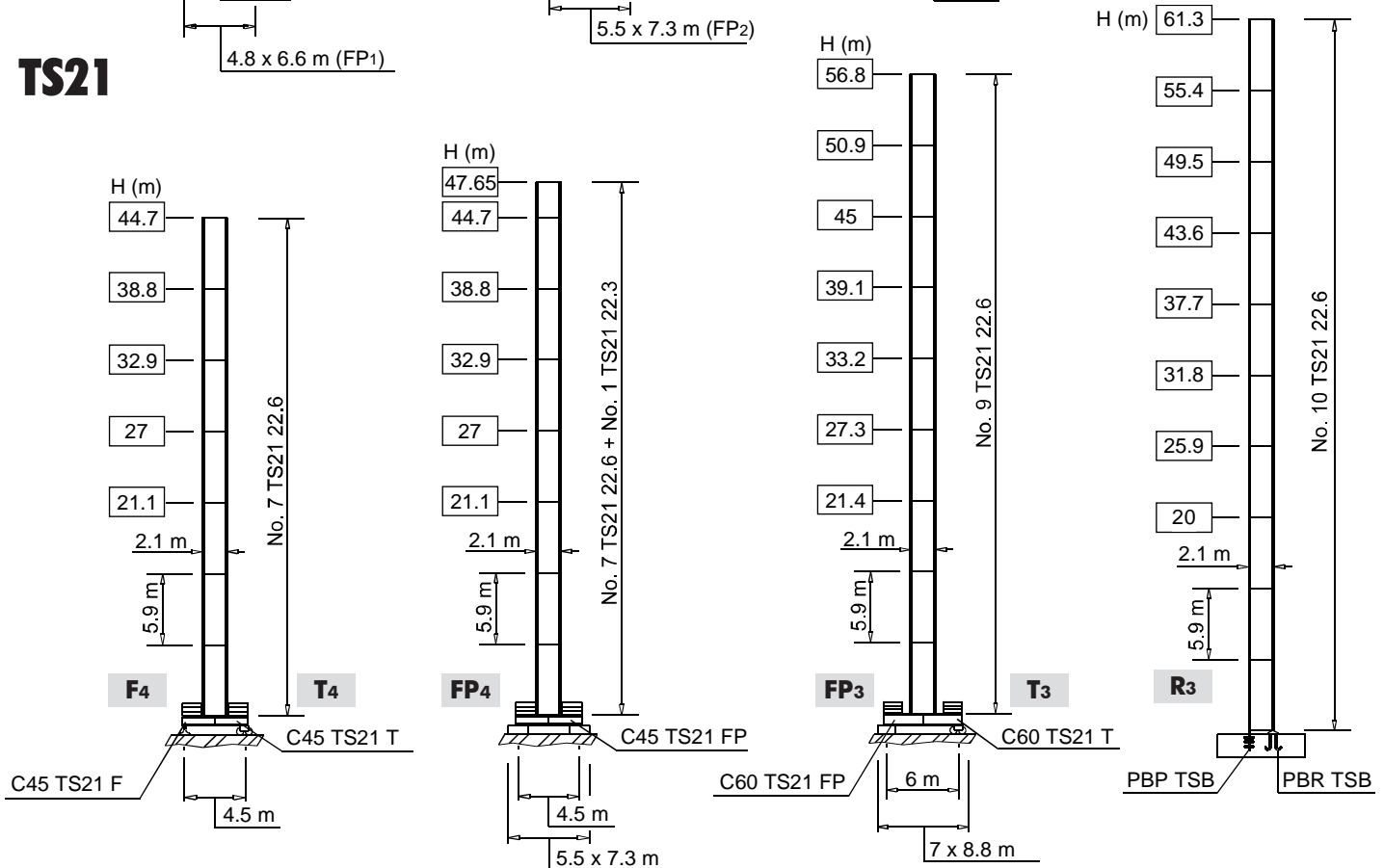
**GB** The available lengths for the TS tower sections are 11.8 m, 5.9 m, 2.95 m.

**D** Die Turmschüsse TS sind mit Längen 11.8 m, 5.9 m, 2.95 m verfügbar.

## TS16



## TS21





# CTT 141-6

Meccanismi  
Mechanisms



Mécanismes  
Antriebe



Mecanismos



	18 APC 30	55 * kVA	400 V - 50 Hz
	22 AFC 30	61 * kVA	400 V - 50 Hz / 460 V - 60 Hz
			CE 87/405

\* Gru senza traslazione / Crane without travelling equipment / Grue sans translation / Krane ohne Schienenfahren / Grúa sin traslación

		m/min	t	kW			
	18 APC 30		7	3	18	220 m	
			30	3			
			59	1.5			
			3.5	6			
			15	6			
			29.5	3			
	22 AFC 30 (VARIANT)		0 ⇌ 2.4	3	22	300 m	
			2.4 ⇌ 9	3			
			9 ⇌ 38	3			
			38 ⇌ 61	1.88			
			61 ⇌ 77	1.43			
			0 ⇌ 1.2	6			350 m (LEBUS)
			1.2 ⇌ 4.5	6			
			4.5 ⇌ 19	6			
			19 ⇌ 30.5	3.76			
			30.5 ⇌ 38.5	2.86			

	DVF 3 4 (VARIANT)	0 ⇌ 6 ⇌ 32 ⇌ 64 m/min	4 kW
	SSR 2 2 65	0.7 r.p.m. (50 Hz)    0.84 r.p.m. (60 Hz)	2 × 65 Nm
	▲ TAD 2RP 2M4	0 - 24 m/min	2 × 4 kW
	● TAD 2RG 4M3		4 × 3 kW

	▲	●
	Max. H [m]	
T <sub>2</sub> -T <sub>4</sub>	38.8	> 38.8
T <sub>3</sub>	39.1	> 39.1

	Sollevamento		Hoisting		Heben		Elevación	
	Traslazione carrello		Trolleying		Katzfahren		Distribución	
	Rotazione		Slewing		Schwenken		Orientación	
	Traslazione		Travelling		Schienenfahren		Traslación	
	Direttiva sul livello acustico		Directive on noise level		Richtlinie für den Schall-Leistungspegel		Directiva sobre el nivel acustico	
	Consultateci		Consult us		Auf Anfrage		Consultarnos	
	Potenza totale richiesta		Power requirements		Geforderte Stromstärke		Potencia necesaria	
	Alimentazione		Power supply		Stromversorgung		Alimentación	

## Gru Comedil s.r.l.

A Terex Company

Via S. Egidio 42/A, 33074 Fontanafredda (PN) - Italy  
Tel. (+39) 0434 567 311 - Telefax (+39) 0434 998631

Internet e-mail: info@comedil.com  
Internet home page: http://www.comedil.com

Terex Internet home page: http://www.terex.com

## Divisione Automontanti

Via Alessandrina, 25 - 20095 Cusano Milanino (MI) - Italy  
Tel. (+39) 02 613 16011 - Telefax (+39) 02 613 16034

Internet e-mail: info.CBR@comedil.com

