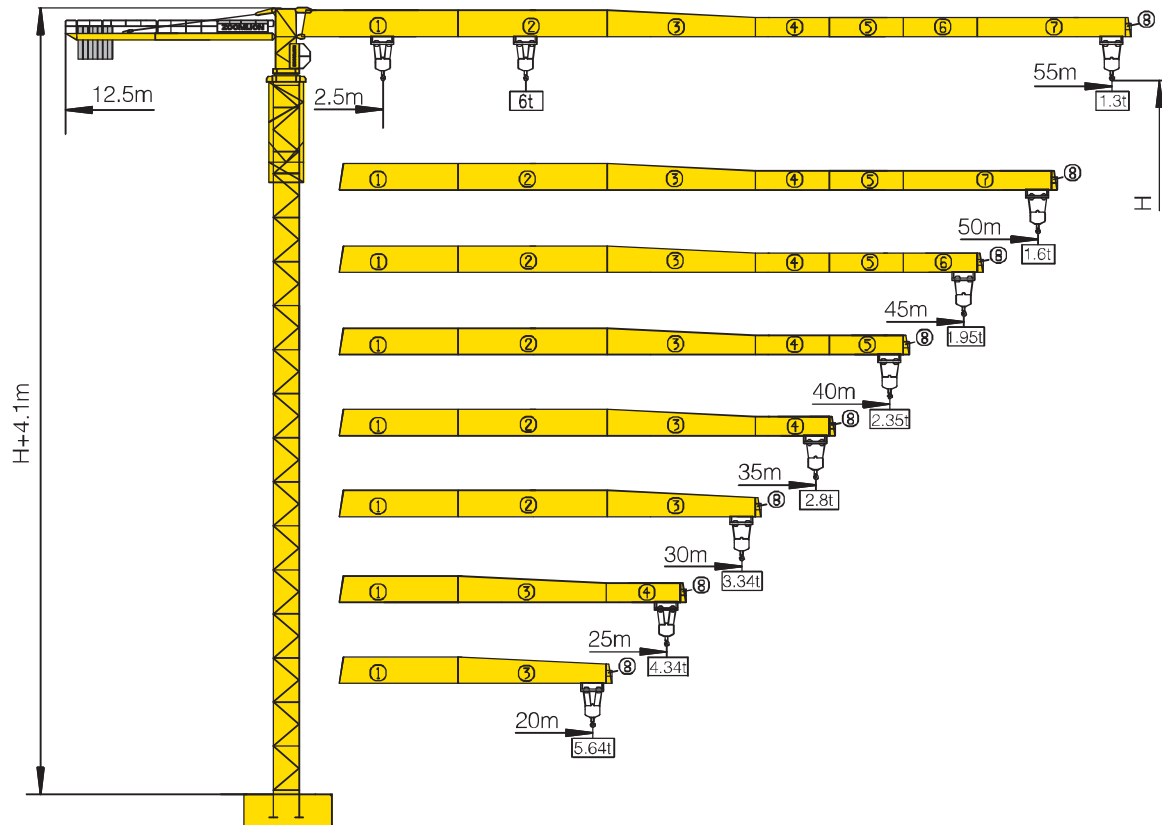


TCT5513-6



Counter-jib ballast

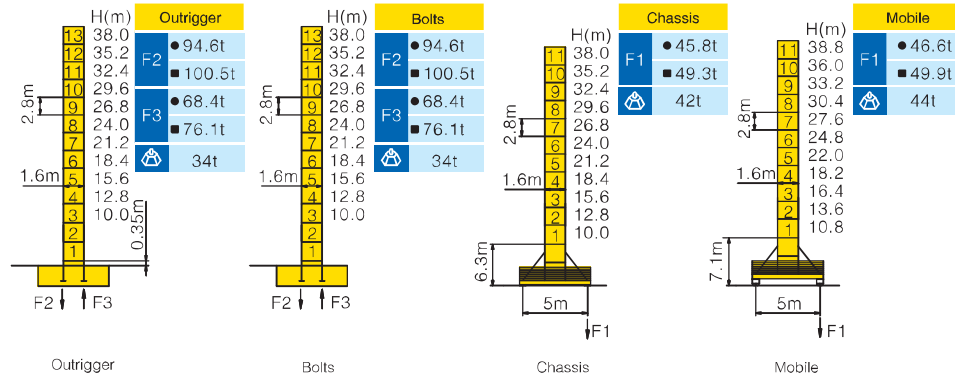
			(Kg)	PHZ3500	PHZ3000	PHZ1000
55m	12.5m	15000	2	2	2	
50m	12.5m	14000	2	2	1	
45m	12.5m	13000	2	2	0	
40m	12.5m	12000	2	1	2	
35m	12.5m	11000	2	1	1	
30m	12.5m	9500	1	2	0	
25m	12.5m	7500	1	1	1	
20m	12.5m	6500	1	1	0	

Working Height(m) @ Wall-tie Location(m)

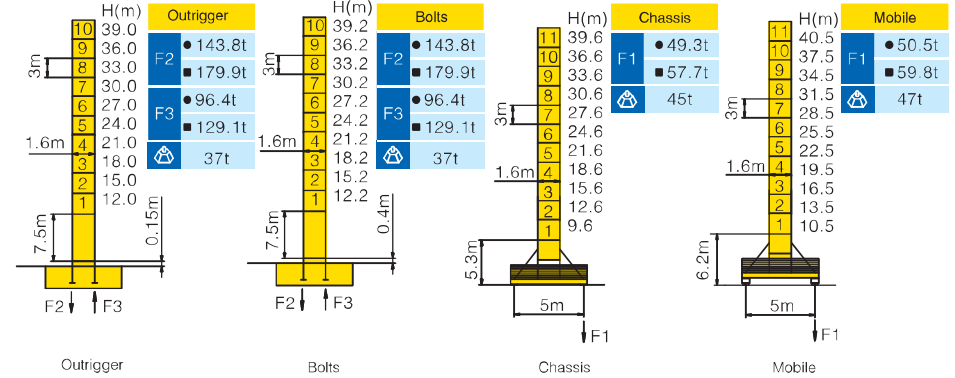
Model Detail	Mast Code	Wall-tie #1	Wall-tie #2	Wall-tie #3	Wall-tie #4	Wall-tie #5	Wall-tie #6	Wall-tie #7	Wall-tie #8	Wall-tie #9
TCT5513-6	EQ7	63 @ 28.7	88 @ 54	111 @ 79	133 @ 101.5	152 @ 123.9	172 @ 143.5	189 @ 163.1	206 @ 179.9	220 @ 196.7
TCT5513-6F	L46A1	63 @ 29	87 @ 53	108 @ 77	129 @ 98	150 @ 119	171 @ 140	192 @ 161	210 @ 182	219 @ 200

Masts Reactions

TCT5513-6



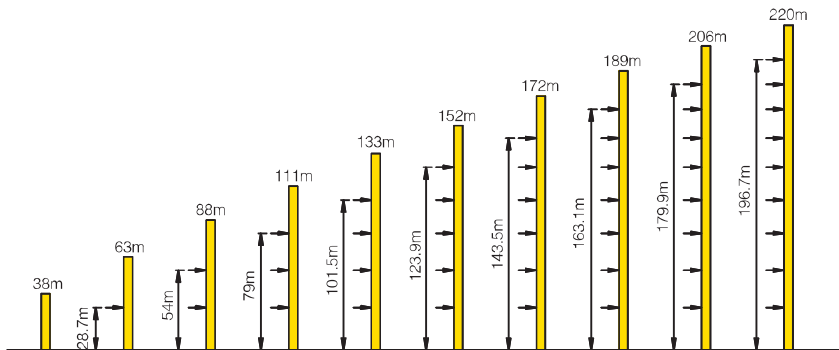
TCT5513-6F



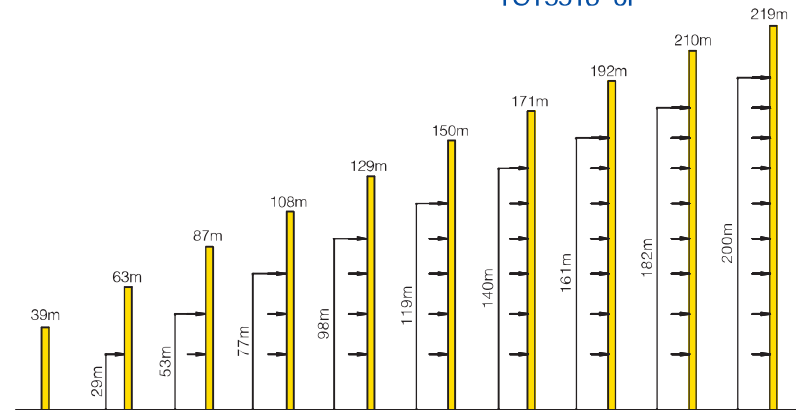
● Reactions in service ■ Reactions out of service
 ⊗ Without load and ballast with longest jib and maximum height
 ⓘ For more erecting solutions, consult us!

Anchorage

TCT5513-6






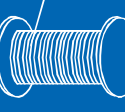
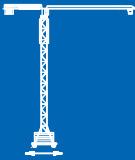
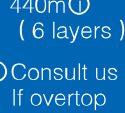

TCT5513-6F



Load diagrams

		Max.Capacity m/t	20.0	22.5	25.0	27.5	30.0	32.5	35.0	37.5	40.0	42.5	45.0	47.5	50.0	52.5	55.0
55m (R=56)	б	2.5—29.5m 3t	3.00	3.00	3.00	3.00	2.93	2.65	2.42	2.21	2.03	1.87	1.73	1.61	1.49	1.39	1.30
	бб	2.5—16.3m 6t	4.71	4.09	3.60	3.20	2.87	2.59	2.36	2.21	1.97	1.81	1.67	1.55	1.43	1.33	1.24
50m (R=51)	б	2.5—30.9m 3t	3.00	3.00	3.00	3.00	3.00	2.82	2.57	2.35	2.16	2.00	1.85	1.72	1.60		
	бб	2.5—17.0m 6t	4.98	4.33	3.82	3.40	3.05	2.76	2.51	2.29	2.10	1.94	1.79	1.66	1.54		
45m (R=46)	б	2.5—32.1m 3t	3.00	3.00	3.00	3.00	3.00	2.96	2.70	2.47	2.28	2.10	1.95				
	бб	2.5—17.7m 6t	5.21	4.53	4.00	3.56	3.20	2.90	2.64	2.41	2.22	2.04	1.89				
40m (R=41)	б	2.5—32.9m 3t	3.00	3.00	3.00	3.00	3.00	3.00	2.78	2.55	2.35						
	бб	2.5—18.1m 6t	5.36	4.67	4.12	3.67	3.30	2.99	2.72	2.49	2.29						
35m (R=36)	б	2.5—33.1m 3t	3.00	3.00	3.00	3.00	3.00	3.00	2.80								
	бб	2.5—18.2m 6t	5.39	4.70	4.14	3.69	3.32	3.01	2.74								
30m (R=31)	б	2.5—33.2m 3t	3.00	3.00	3.00	3.00	3.00										
	бб	2.5—18.3m 6t	5.42	4.72	4.17	3.71	3.34										
25m (R=26)	б	2.5—34.4m 3t	3.00	3.00	3.00												
	бб	2.5—18.9m 6t	5.64	4.91	4.34												
20m (R=21)	б	2.5—34.4m 2t	3.00														
	бб	2.5—19.0m 6t	5.64														

Mechanisms

		Hoisting		QS680E1				
	Slewing	HVV95F1.130A			III	♢	1.5t	80 m/min
		0 ~ 0.6 r/min	95 N.m			♢♢	3t	40 m/min
	Trolleying	BE33E			II	♢	3t	40 m/min
		50/25 m/min	3.0/2.2 kW			♢♢	6t	20 m/min
	Travelling	ZA52A-D ZC52A-D			I	♢	3t	8.88 m/min
		0 ~ 25 m/min	2×5.2 kW			♢♢	6t	4.44 m/min
		380V(+10%–10%) 50Hz			32.5+2×5.2 kW			

24/24/5.4 kW

440m[⊙]
(6 layers)

⊙ Consult us
If overtop

For more mechanisms optional, consult us!