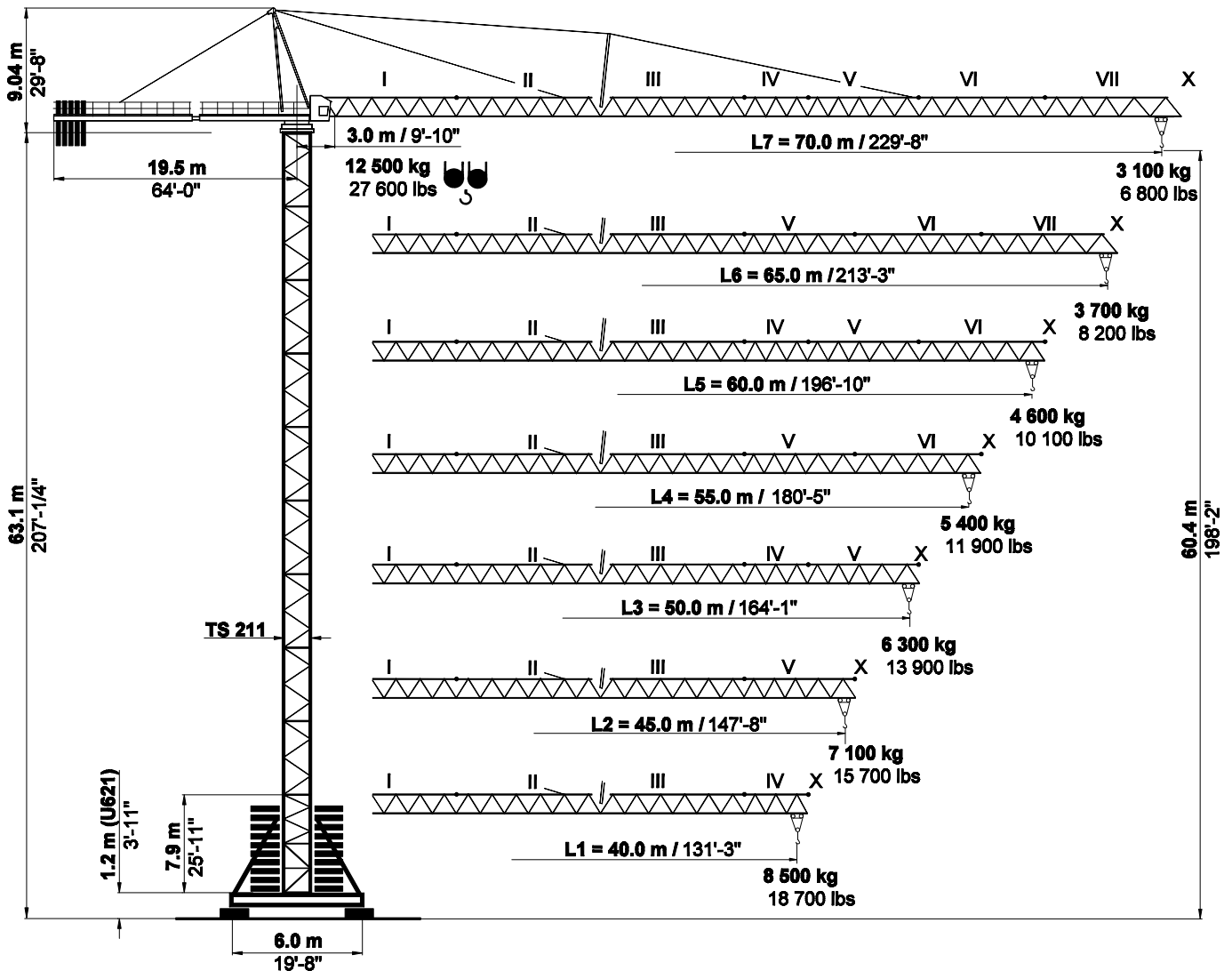
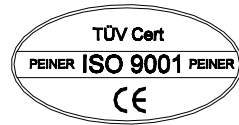


# PEINER SK 315

FEM 1001/3	A3
Max. Tragfähigkeit Lifting capacity Force de levage	<b>6.3/12.5 t</b> 13 800 / 27 600 lbs

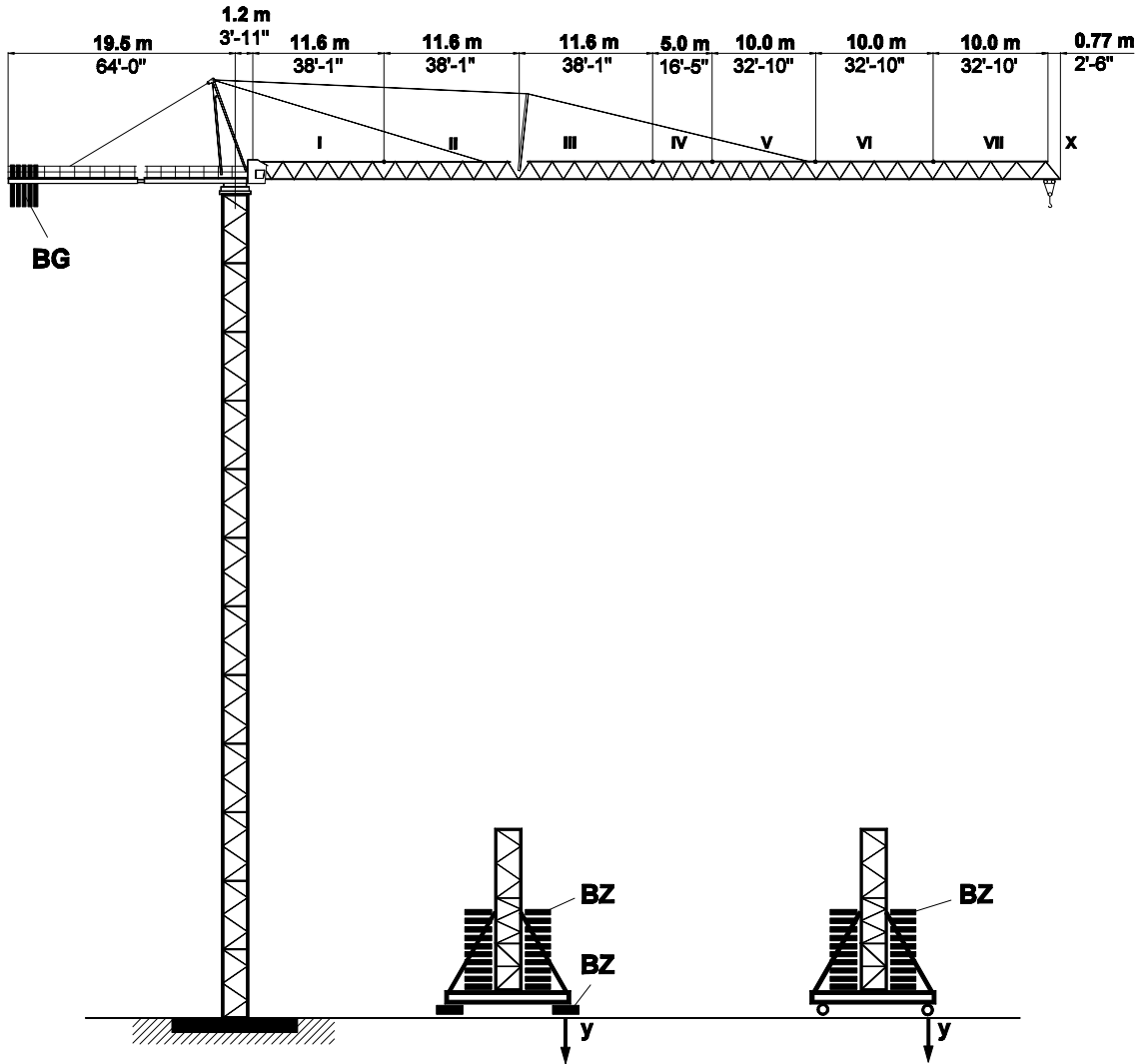


Unsere Vertretung:  
Our representative:  
Notre représentant:

**SK 315**  
 (12.5 t /  
 27.6 kips)

**Turmkombinationen, Hakenhöhen, Eckkräfte, Zentralballast**

Combinations of tower section, hook heights, forces acting per corner, base ballast  
 Combinations possibles et hauteurs sous crochet, pressions par coin, contrepoids central

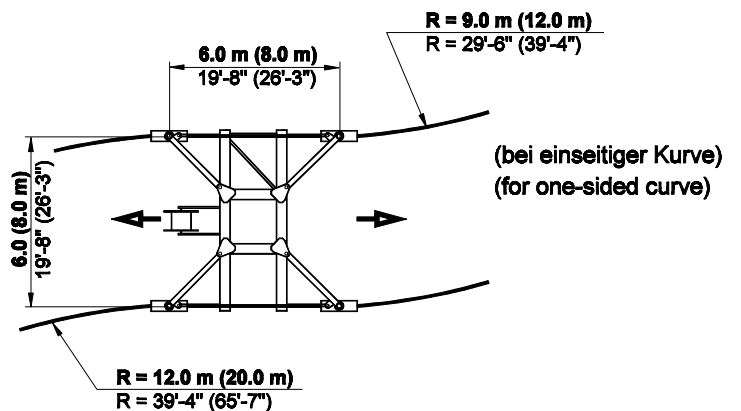
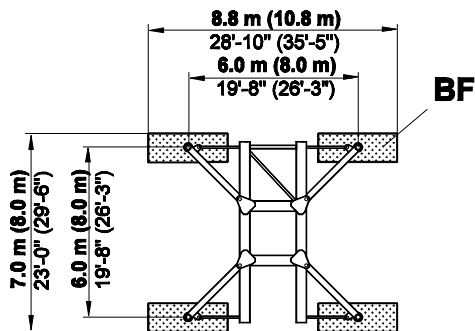


Version:

**A**  
**U 621 / U 821**

**F**

**E**  
**UF 621 / UF 821**



**Bodenauflagen**

Ground support  
 Support sol

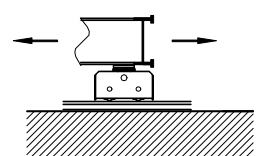
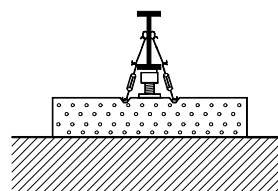
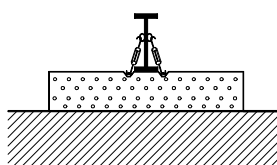
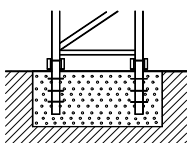
Version:

**A**

**F**

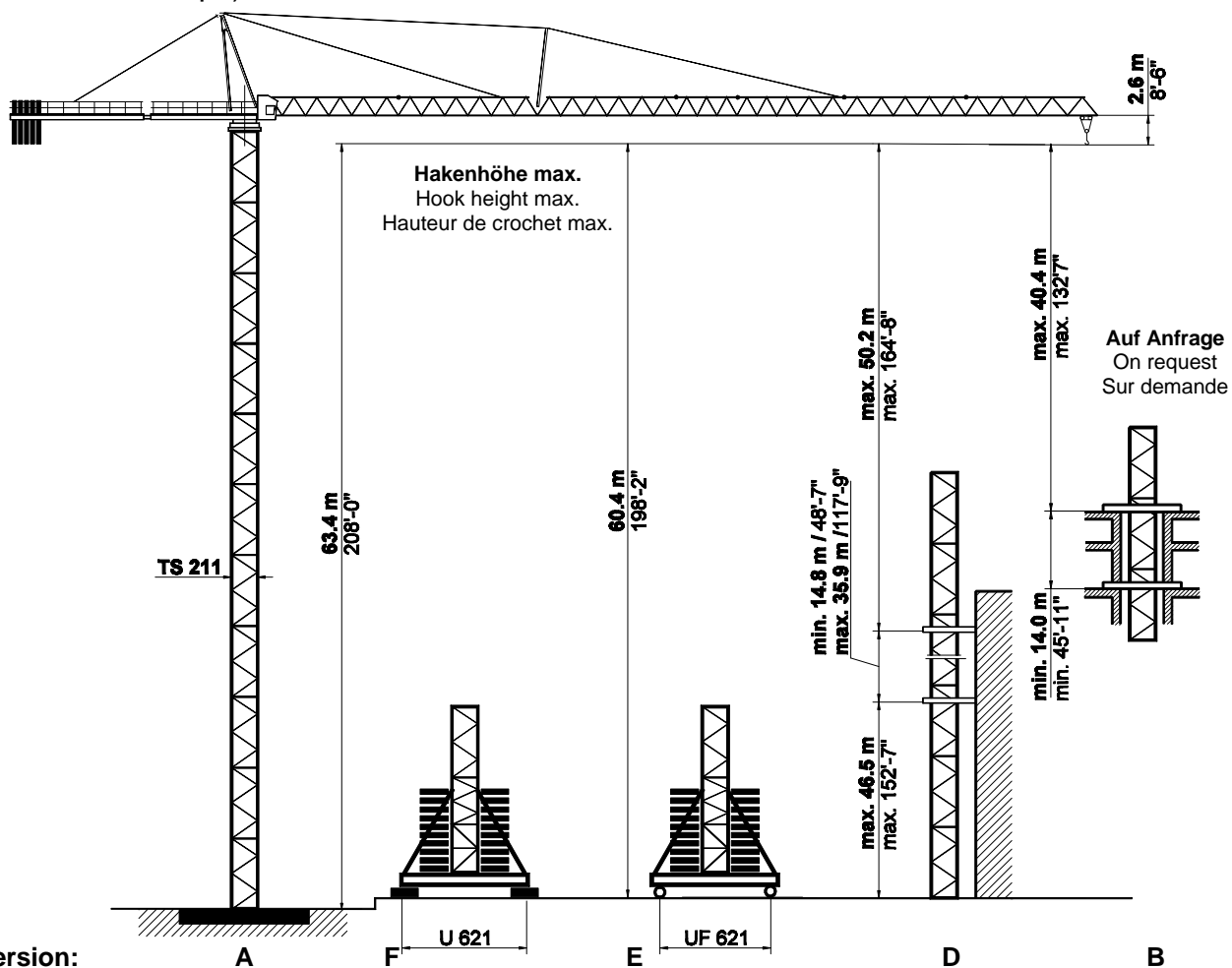
**F / SP**

**E**



# SK 315 Turm / Tower / Tour TS 211

(12.5 t / 27.6 kips)



Version:

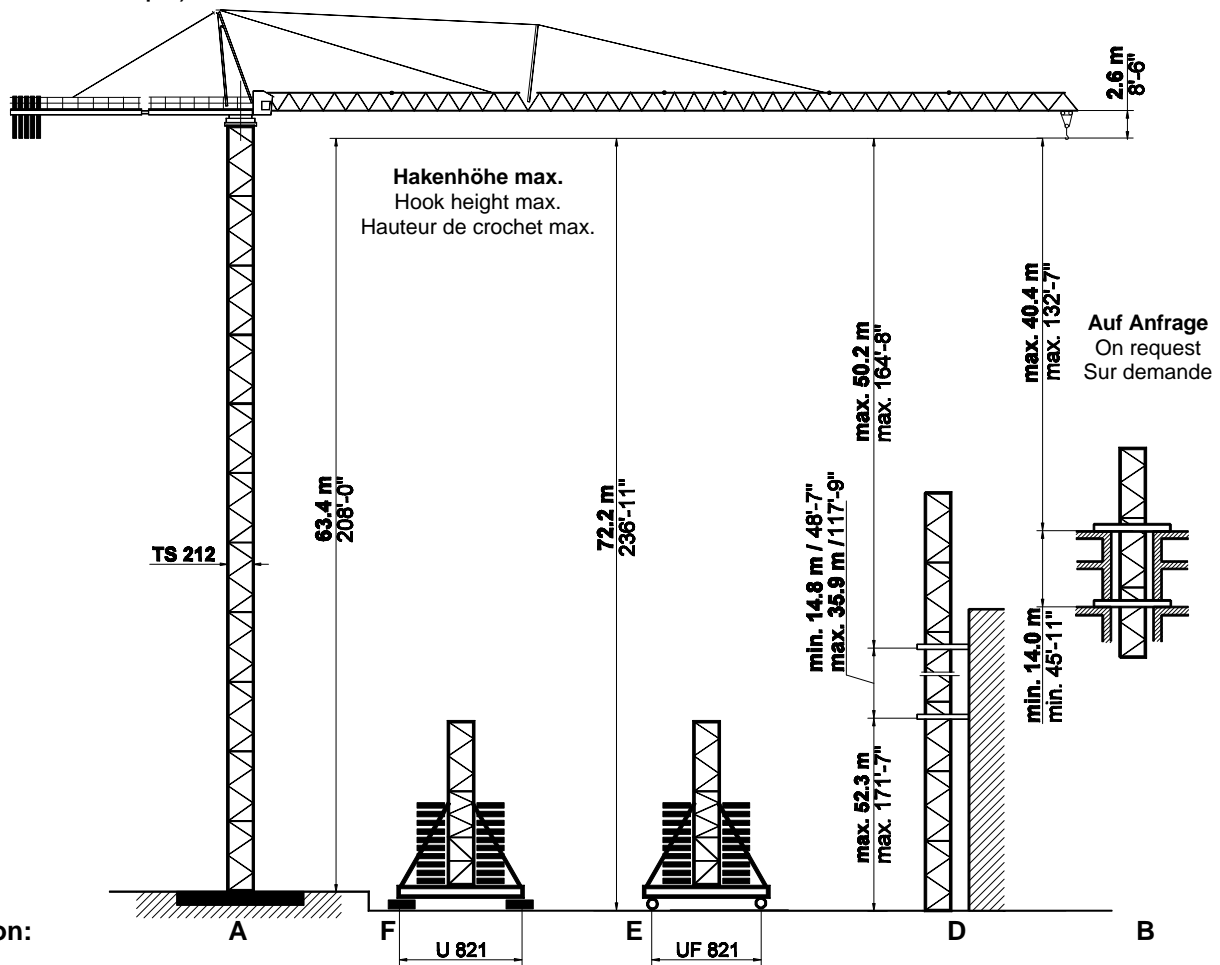
TS 211	Version A	Version F						Version E			
Turm Tower, Tour TS 211.1	HH m / ft	Turm Tower, Tour TSV 211 TS 211.1	HH m / ft	BZ + BF t / kips	i.B. kN / kips	y a.B. kN / kips	BZ t / kips	i.B. kN / kips	y a.B. kN / kips		
11 x TS 211.1	63.4* 208'-0"										
10 x TS 211.1	57.5* 188'-8"	1 x TSV 211 9 x TS 211.1	60.4* 198'-2"	136 300	989 222	1116 251	130 287	1055 237	1127 253		
9 x TS 211.1	51.6 169'-4"	1 x TSV 211 8 x TS 211.1	54.5 178'-10"	116 256	904 203	954 215	110 243	962 216	964 217		
8 x TS 211.1	45.7 149'-11"	1 x TSV 211 7 x TS 211.1	48.6 159'-5"	106 234	846 190	825 186	100 221	897 202	834 188		
7 x TS 211.1	39.8 130'-7"	1 x TSV 211 6 x TS 211.1	42.7 140'-1"	86 190	764 172	677 152	80 177	809 182	687 154		
6 x TS 211.1	33.9 111'-3"	1 x TSV 211 5 x TS 211.1	36.8 120'-9"	76 168	710 160	563 127	80 177	774 174	597 134		
5 x TS 211.1	28.0 91'-10"	1 x TSV 211 4 x TS 211.1	30.9 101'-5"	76 168	682 153	481 108	70 154	715 161	489 110		
4 x TS 211.1	22.1 72'-6"	1 x TSV 211 3 x TS 211.1	25.0 82'-0"	76 168	655 147	406 91	70 154	684 154	414 93		
3 x TS 211.1	16.2 53'-2"	1 x TSV 211 2 x TS 211.1	19.1 62'-8"	76 168	631 142	413 93	60 132	629 141	390 88		
2 x TS 211.1	10.3 33'-9"	1 x TSV 211 1 x TS 211.1	13.2 43'-4"	76 168	583 131	445 100	60 132	602 135	448 101		
Fundament Foundation Fondaton 6.9 x 6.9 x 1.7 m 22'-8" x 22'-8" x 5'-7"		Unterwagen Stationary base Châssis fixe U 621				Unterwagen, kurvenfahrbar Railgoing base Châssis roulant UF 621					
Fundamentfüße Fixing angles Ancres de fondation 4 x FF 212				BF 4 x 4.0 t 4 x 8.82 kips	BZ Block 5.0 t block 11.03 kips	Fahrschemel / bogie Kurve / curve / courbe F 500					

Bei Verwendung des TSK 212.1 erhöht sich die Hakenhöhe um 2 m. / Using the tower section TSK 212.1 the hook height is increased by 2 m. / La hauteur sous crochet augmente de 2 m lorsqu'n TSK 212.1 est utilisé. \*Kletterstulpe ablassen / Lower climbing cage after erection / Baissez la cage télescopique après le montage.

TS 211.1 = 5.9 m / 19'-4 1/4"    TS 211.2 = 11.8 m / 38'-7'-8 1/2"    TSV 211 = 7.9 m / 25'-11"    TSK 212 = 2.0 m / 6'-7"

# SK 315 Turm / Tower / Tour TS 212

(12.5 t / 27.6 kips)



Version:

TS 212	Version A	Version F						Version E				
Turm Tower, Tour TS 212.1	HH	Turm Tower, Tour TSV 212 TS 212.1	HH	BZ + BF	i.B.	y	a.B.	BZ	i.B.	y	a.B.	
	m / ft		m / ft	t / kips	kN / kips		kN / kips	t / kips	kN / kips		kN / kips	
		1 x TSV 212 11 x TS 212.1	72.2* 236'-11"	136 300	1010 227		1286 289	120 265	1090 245		1294 291	
11 x TS 212.1	63.4* 208'-0"	1 x TSV 212 10 x TS 212.1	66.3* 217'-6"	126 278	952 214		1121 252	110 243	1019 229		1108 249	
10 x TS 212.1	57.5* 188'-8"	1 x TSV 212 9 x TS 212.1	60.4 198'-2"	116 256	894 201		996 224	100 221	947 213		983 221	
9 x TS 212.1	51.6 169'-4"	1 x TSV 212 8 x TS 212.1	54.5 178'-10"	106 234	836 188		881 198	90 199	881 198		863 194	
8 x TS 212.1	45.7 149'-11"	1 x TSV 212 7 x TS 212.1	48.6 159'-5"	96 212	783 176		770 173	80 177	814 183		752 169	
7 x TS 212.1	39.8 130'-7"	1 x TSV 212 6 x TS 212.1	42.7 140'-1"	86 190	729 164		663 149	70 154	747 168		645 145	
6 x TS 212.1	33.9 111'-3"	1 x TSV 212 5 x TS 212.1	36.8 120'-9"	76 168	667 150		565 127	60 132	685 154		547 123	
5 x TS 212.1	28.0 91'-10"	1 x TSV 212 4 x TS 212.1	30.9 101'-5"	66 146	627 141		471 106	50 110	627 141		454 102	
4 x TS 212.1	22.1 72'-6"	1 x TSV 212 3 x TS 212.1	25.0 82'-0"	56 124	578 130		387 87	40 88	574 129		369 83	
3 x TS 212.1	16.2 53'-2"	1 x TSV 212 2 x TS 212.1	19.1 62'-8"	56 124	556 125		338 76	40 88	547 123		334 75	
2 x TS 212.1	10.3 33'-9"	1 x TSV 212 1 x TS 212.1	13.2 43'-4"	56 124	534 120		360 81	40 88	525 118		369 83	
<b>Fundament</b> Foundation Fondaton 7.4 x 7.4 x 1.7 m 24'-3" x 24'-3" x 5'-7"						<b>Unterwagen</b> Stationary base Châssis fixe U 821			<b>Unterwagen, kurvenfahrbar</b> Railgong base Châssis roulant UF 821			
<b>Fundamentfüße</b> Fixing angles Ancres de fondation 4 x FF 212						<b>BF</b> 4 x 4.0 t 4 x 8.82 kips		<b>BZ</b> Block 5.0 t block 11.03 kips		<b>Fahrschemel / bogie</b> Kurve / curve / courbe F 500		

Bei Verwendung des TSK 212 erhöht sich die Hakenhöhe um 2 m. / Using the tower section TSK 212 the hook height is increased by 2 m. / La hauteur sous crochet augmente de 2 m lorsqu'n TSK 212 est utilisé. \*Kletterstulpe ablassen / Lower climbing cage after erection / Baissez la cage télescopique après le montage.

TS 212.1 = 5.9 m / 19'-4 1/4"

TSV 212 = 7.9 m / 25'-11"

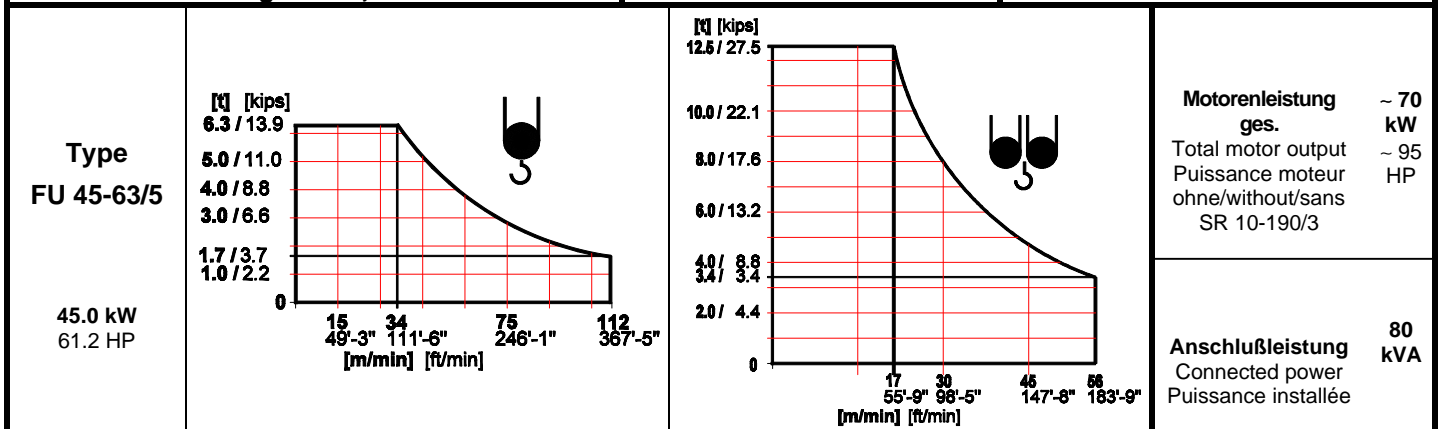
TSK 212 = 2.0 m / 6'-7"

# SK 315 (12.5 t / 27.6 kips) Ausladung und Tragfähigkeit / Radius and capacity / Portée et charge

Ausleger Jib Flèche	Max. Tragfähig- keit max. capacity charge max.	Ausladung (m) und Tragfähigkeit (t) Radius (m) and capacity (t) Portée (m) et charge (t)																
		23 m 75'-5"	25 m 82'-0"	30 m 98'-5"	35 m 114'-10"	40 m 131'-3"	43 m 141'-1"	45 m 147'-8"	48 m 157'-6"	50 m 164'-1"	53 m 173'-11"	55 m 180'-5"	58 m 190'-3"	60 m 196'-10"	63 m 206'-8"	65 m 213'-3"	68 m 223'-1"	70 m 229'-8"
m / ft	12.5 t 27.6 kips																	
L7 70.0 229'-8"	3.0-20.5 m 9'-10"-67'-3"	11.1 24.5	10.1 22.2	8.3 18.3	7.0 15.4	6.0 13.2	5.6 12.3	5.3 11.7	4.9 10.8	4.7 10.4	4.4 9.7	4.2 9.3	3.9 8.6	3.7 8.2	3.5 7.7	3.4 7.5	3.2 7.1	3.1 6.8
L6 65.0 213'-3"	3.0-21.8 m 9'-10"-71'-6"	11.9 26.2	10.9 24.0	8.9 19.6	7.6 16.8	6.5 14.3	6.0 13.2	5.7 12.6	5.3 11.7	5.1 11.2	4.7 10.4	4.5 9.9	4.2 9.3	4.1 9.0	3.8 8.4	3.7 8.2		
L5 60.0 196'-10"	3.0-24.0 m 9'-10"-78'-9"	12.5 27.6	12.1 26.7	10.0 22.0	8.4 18.5	7.3 16.1	6.7 14.8	6.4 14.1	5.9 13.0	5.7 12.6	5.3 11.7	5.1 11.2	4.8 10.6	4.6 10.1				
L4 55.0 180'-5"	3.0-25.2 m 9'-10"-82'-8"	12.5 27.6	12.5 27.6	10.5 23.1	8.9 19.6	7.7 17.0	7.1 15.7	6.8 15.0	6.3 13.9	6.0 13.2	5.7 12.6	5.4 11.9						
L3 50.0 164'-1"	3.0-26.3 m 9'-10"-86'-3"	12.5 27.6	12.5 27.6	11.0 24.2	9.3 20.5	8.1 17.9	7.4 16.3	7.1 15.7	6.6 14.5	6.3 13.9								
L2 45.0 147'-8"	3.0-26.4 m 9'-10"-86'-7"	12.5 27.6	12.5 27.6	11.0 24.2	9.3 20.5	8.1 17.9	7.5 16.5	7.1 15.7										
L1 40.0 131'-3"	3.0-27.7 m 9'-10"-90'-11"	12.5 27.6	12.5 27.6	11.6 25.6	9.8 21.6	8.5 18.7												

## Geschwindigkeiten / Speeds / Vitesses

FU 8-160/4		$v = 0 \rightarrow 88 \text{ m / min. } (\sim 290 \text{ fpm})$	7.5 kW 10.2 HP	Bei 440 V bzw. 480 V / 60 Hz erhöhen sich die Antriebsleistungen um ~10% bzw. ~20% und Geschwindigkeiten um ~20%. FU-Antriebe ausgenommen. At 440 V or 480 V / 60 Hz the power of the drive units are increased by ~10% or ~20% and the speeds by ~20%. Excluded FC-drives.
SR 10-190/3		$v = 0 \rightarrow 25 \text{ m / min. } (\sim 80 \text{ fpm})$	2 x 10.0 kW 2 x 13.6 HP	
K WB 120/4		$v = 0 \rightarrow 0.75 \text{ min}^{-1} \text{ (rpm)}$	2 x 7.0 kW 2 x 9.5 HP	
		HK max. = 215 m 6-Lagen / 6-layers / 6-couches	400 V / 50 Hz / 3 ph	



		HK max. = 215 m		6-Lagen / 6-layers / 6-couches				
<b>Type</b> SR WB 66-63/4F  66.0 kW 89.6 HP			$\rightarrow 112 \text{ m/min } 370 \text{ fpm}$	2 500 kg 5 500 lbs		$\rightarrow 56 \text{ m/min } 185 \text{ fpm}$	5 000 kg 11 000 lbs	<b>Motorenleistung ges.</b> ~ 90 kW Puisance moteur ohne/without/sans SR 10-190/3 ~ 120 HP
			$\rightarrow 70 \text{ m/min } 230 \text{ fpm}$	4 200 kg 9 300 lbs		$\rightarrow 35 \text{ m/min } 115 \text{ fpm}$	8 400 kg 18 600 lbs	
			$\rightarrow 45 \text{ m/min } 150 \text{ fpm}$	6 300 kg 13 900 lbs		$\rightarrow 23 \text{ m/min } 75 \text{ fpm}$	12 500 kg 27 600 lbs	<b>Anschlußleistung</b> 140 kVA Connected power Puisance installée
			$\rightarrow 28 \text{ m/min } 90 \text{ fpm}$			$\rightarrow 14 \text{ m/min } 45 \text{ fpm}$		

## Gegengewichtsballast / Counterweight / Contrepoids

Ausleger / Jib / Flèche		L 1	L 2	L 3	L 4	L 5	L 6	L 7
Gegengewicht Counterweight Contrepoids	BG	13 600 kg 30 000 lbs	14 600 kg 32 200 lbs	16 700 kg 36 950 lbs	17 750 kg 39 150 lbs	19 750 kg 43 550 lbs	19 750 kg 43 550 lbs	20 750 kg 45 750 lbs
	[t]	3 x 3.15 1 x 4.15	2 x 3.15 2 x 4.15	4 x 3.15 1 x 4.15	3 x 3.15 2 x 4.15	1 x 3.15 4 x 4.15	1 x 3.15 4 x 4.15	5 x 4.15
	[lbs]	3 x 6 950	2 x 6 950 2 x 9 150	4 x 6 950 1 x 9 150	3 x 6 950 2 x 9 150	1 x 6 950 4 x 9 150	1 x 6 950 4 x 9 150	5 x 9 150

# SK 285 / 315 Transportmaße und Transportgewichte

Dimensions and weights of transport  
Dimensions et poids pour transport

Montagegewichte siehe Betriebsanleitung!  
Mounting weights see operating manual!  
Poids de montage voir instruction de service!

	Benennung Designation Désignation		Abmessungen (m / ft) Dimensions (m / ft)			Gewicht t Weight Poids t / kips	Volumen Volume m <sup>3</sup> / ft <sup>3</sup>		
			l	b	h				
1	<b>Ausleger / Jib / Flèche</b> Schuss / Section / Élément III		<b>11.94</b> 39.01	<b>1.52</b> 4.99	<b>2.16</b> 7.09	<b>1.92</b> 4.23	<b>39.2</b> 1386		
2	<b>Ausleger / Jib / Flèche</b> Schuss / Section / Élément I		<b>11.89</b> 39.01	<b>1.52</b> 4.99	<b>1.78</b> 5.84	<b>1.72</b> 3.80	<b>32.2</b> 1137		
	Schuss / Section / Élément II		<b>11.78</b> 38.65	<b>1.52</b> 4.99	<b>1.88</b> 6.17	<b>1.96</b> 4.32	<b>33.7</b> 1190		
	Schuss / Section / Élément IV		<b>5.85</b> 19.19	<b>1.52</b> 4.99	<b>1.65</b> 5.41	<b>0.80</b> 1.80	<b>14.7</b> 519		
	Schuss / Section / Élément V		<b>10.77</b> 35.34	<b>1.52</b> 4.99	<b>1.66</b> 5.45	<b>1.40</b> 3.10	<b>27.2</b> 961		
	Schuss / Section / Élément VI		<b>10.98</b> 36.03	<b>1.52</b> 4.99	<b>1.67</b> 5.48	<b>1.12</b> 2.50	<b>27.9</b> 985		
	Schuss / Section / Élément VII		<b>10.16</b> 33.33	<b>1.52</b> 4.99	<b>1.62</b> 5.32	<b>0.71</b> 1.60	<b>25.0</b> 853		
	Seilstation / Jib tip / Bout de flèche X		<b>0.95</b> 3.12	<b>1.53</b> 5.02	<b>0.50</b> 1.64	<b>0.14</b> 0.31	<b>0.7</b> 25		
3.1	<b>Drehbühne mit Drehkranzauflage u. Kabine</b> Turntable with slewing ring support and cabin Plateforme tournante avec support de couronne d'orientation et cabine		<b>11.08</b> 36.35	<b>2.33</b> 7.64	<b>2.38</b> 7.81	<b>11.50</b> 25.40	<b>61.4</b> 2169		
	<b>Drehbühne mit Drehkranzauflage</b> Turntable with slewing ring support Plateforme tournante avec support couronne d'orientation		<b>9.75</b> 31.99	<b>2.33</b> 7.64	<b>2.38</b> 7.81	<b>10.90</b> 24.00	<b>54.1</b> 1911		
	<b>Kabine mit Podest und Geländer</b> Cabin with support and railing Cabine avec appui et garde corps		<b>3.10</b> 10.17	<b>1.50</b> 4.92	<b>2.21</b> 7.25	<b>0.60</b> 1.32	<b>10.3</b> 364		
3.2	<b>Gegenausleger mit Hubwinde</b> Counter jib with hoist winch Contre-flèche et mécanisme de levage		<b>11.62</b> 38.13	<b>1.80</b> 5.91	<b>1.83</b> 6.00	<b>6.60</b> 14.60 *6.17 *13.60	<b>38.3</b> 1353		
	<b>Hubwinde</b> 66 WB Hoist winch		<b>2.29</b> 7.51	<b>1.66</b> 5.45	<b>1.00</b> 3.28	<b>2.45</b> 5.40	<b>3.8</b> 134		
	<b>Mécanisme de levage</b> 45 FU		<b>2.25</b> 7.38	<b>1.62</b> 5.31	<b>1.00</b> 3.28	<b>2.02</b> 4.45	<b>3.6</b> 128		
4	<b>Gegengewichtsballast</b> Counter jib ballast Contrepoids	BG		<b>1.20</b> 3.94 <b>1.20</b> 3.94	<b>0.50</b> 1.64 <b>0.50</b> 1.64	<b>2.84</b> 9.32 <b>3.69</b> 12.11	<b>3.15</b> 6.95 <b>4.15</b> 9.15	<b>1.4</b> 60 <b>1.7</b> 78	
5	<b>Turmschuss</b> Tower section Elément de tour	mit Streben with struts avec étançons	TS 211.1		<b>5.95</b> 19.52	<b>2.33</b> 7.64	<b>2.45</b> 8.01	<b>3.25</b> 7.16	<b>34.0</b> 1195
			TS 212.1		<b>5.95</b> 19.52	<b>2.37</b> 7.78	<b>2.45</b> 8.01	<b>4.14</b> 9.13	<b>34.4</b> 1216
			TS 211.2		<b>11.81</b> 38.75	<b>2.33</b> 7.64	<b>2.45</b> 8.01	<b>6.42</b> 14.15	<b>67.4</b> 2371
			TSV 211		<b>8.70</b> 28.54	<b>2.90</b> 9.51	<b>2.95</b> 9.68	<b>6.57</b> 14.48	<b>74.4</b> 2627
			TSV 212		<b>9.50</b> 31.17	<b>3.00</b> 9.84	<b>3.05</b> 10.00	<b>9.22</b> 20.33	<b>86.9</b> 3067
			TSK 212		<b>2.02</b> 6.63	<b>2.40</b> 7.87	<b>3.00</b> 9.84	<b>2.80</b> 6.17	<b>14.5</b> 513
6	<b>Unterwagen, kurvenfahrb., geklappt</b> Movable undercarriage, folded Châssis roulant, replié	UF 621		<b>9.63</b> 31.59	<b>2.97</b> 9.74	<b>2.15</b> 7.05	<b>13.25</b> 29.21	<b>61.5</b> 2169	
		UF 821		<b>12.5</b> 41.01	<b>2.97</b> 9.74	<b>2.15</b> 7.05	<b>15.90</b> 35.10	<b>79.8</b> 2816	
7	<b>Unterwagen, stationär, geklappt</b> Stationary undercarriage, folded Châssis fixe, replié	U 621		<b>7.66</b> 25.13	<b>2.76</b> 9.06	<b>0.85</b> 2.79	<b>5.12</b> 11.29	<b>17.9</b> 635	
		U 821		<b>10.53</b> 34.55	<b>2.76</b> 9.06	<b>0.85</b> 2.79	<b>7.77</b> 17.10	<b>24.7</b> 873	
8	<b>Zentralballaststein</b> Central ballast block Bloc de fondation	BZ		<b>3.50</b> 11.48	<b>1.50</b> 4.92	<b>0.67</b> 2.20	<b>5.00</b> 11.24	<b>3.5</b> 124	
9	<b>Fundamentblock</b> Foundation pad Bloc de fondation	BF		<b>2.80</b> 9.19	<b>1.00</b> 3.28	<b>0.57</b> 1.87	<b>4.00</b> 8.99	<b>1.6</b> 57	
10	<b>Diverse Montageteile</b> Accessories Accessoires						<b>2.17</b> 4.78		

