

# FLAT TOP TOWER CRANE

**Specifications:**

- ▶ Max jib length: 60,00 m
- ▶ Capacity at max length: 1,91 t
- ▶ Max capacity: 6,00 t



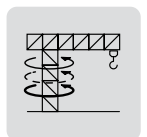
Power Plus



Power Match



Easy Setup



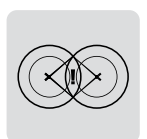
T-Torque



T-Link



Zoning



Anticollision

# KEY

## Legenda · Zeichenerklärung · Légende · Leyenda · Legenda · Условные обозначения



Hoisting · Sollevamento · Heben · Levage · Elevación · Elevação · Подъем



Trolleying · Traslazione carrello · Katzfahren · Distribution · Distribución · Distribuição · Передвижение каретки



Slewing · Rotazione · Schwenken · Orientation · Orientació · Giro · Поворот



Travelling · Traslazione · Schienenfahren · Translation · Traslación · Móvel · Передвижение



Directive on noise level · Direttiva sul livello acustico · Richtlinie für den Schall-Leistungspegel · Directive sur le niveau acoustique · Directiva sobre el nivel acustico · Diretiva sobre nível de ruídos · Директива по уровню шума



Consult us · Consultateci · Auf Anfrage · Nous consulter · Consultarnos · Consulte-nos · Проконсультироваться с нами



Power requirements · Potenza totale richiesta · Geforderte Stromstärke · Puissance totale nécessaire · Potencia necesaria · Requisitos de energia · Требования по питанию



With Terex Power Match · Con Terex Power Match · Mit Terex Power Match · Avec Terex Power Match · Con Terex Power Match · Com Terex Power Match · с Terex Power Match



Power supply · Alimentazione · Stromversorgung · Alimentation · Alimentación · Fonte de alimentação · Питание



In service · In servizio · In Betrieb · En service · En servicio · Em serviço · При работе



Out of service · Fuori servizio · Außer Betrieb · Hors service · Fuera de servicio · Fora de serviço · В режиме простоя



Max. under hook height · Altezza max. sotto gancio · Höchste Hakenhöhe · Hauteur maxi. sous crochet · Maxima altura bajo gancho · Alt. máx. sob o gancho · Макс высота крюка



Without load, without ballast, max. jib and max. height · A vuoto, senza zavorra, braccio max., altezza max. · Ohne Last und Ballast, mit Maximalausleger und Maximalhöhe · A vide, sans lest, avec flèche et hauteur maximum · Sin carga, sin lastre, con pluma y altura máxima · Sem carga, sem lastro, lança máxima, altura máxima · Без груза, без балласта, на макс. Длине вспомогательной стрелы и макс. Высоте



Counterweight · Zavorra controbraccio · Gegengewicht · Lest de contre-flèche · Lastre de contra flecha · Contrapeso · Противовес

**C25**

EN 14439-C25 · EN 14439 - C25 · EN14439 - C25 · EN 14439 - C25 · EN 14439 - C25 · EN 14439 - C25 · EN14439 - C25

# CONTENTS

CTT 152-6

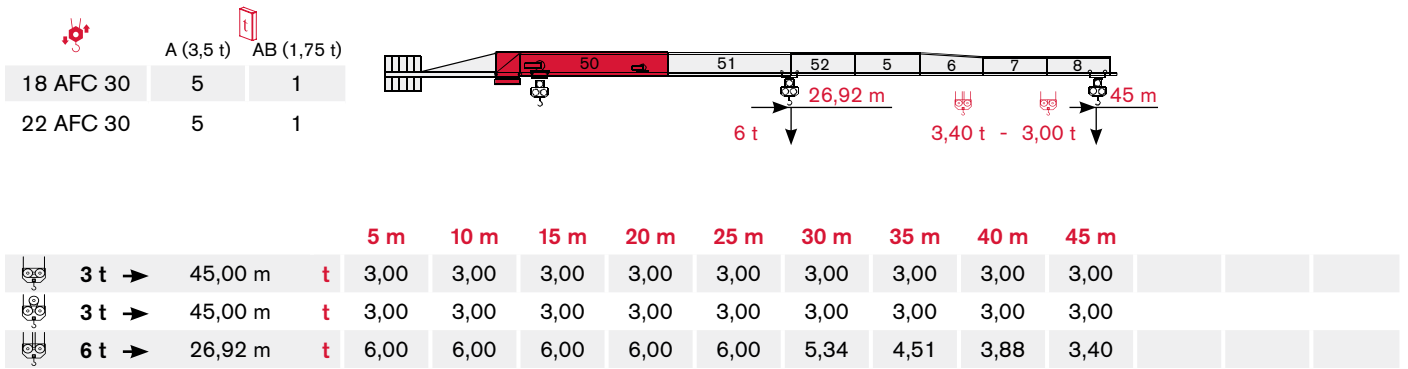
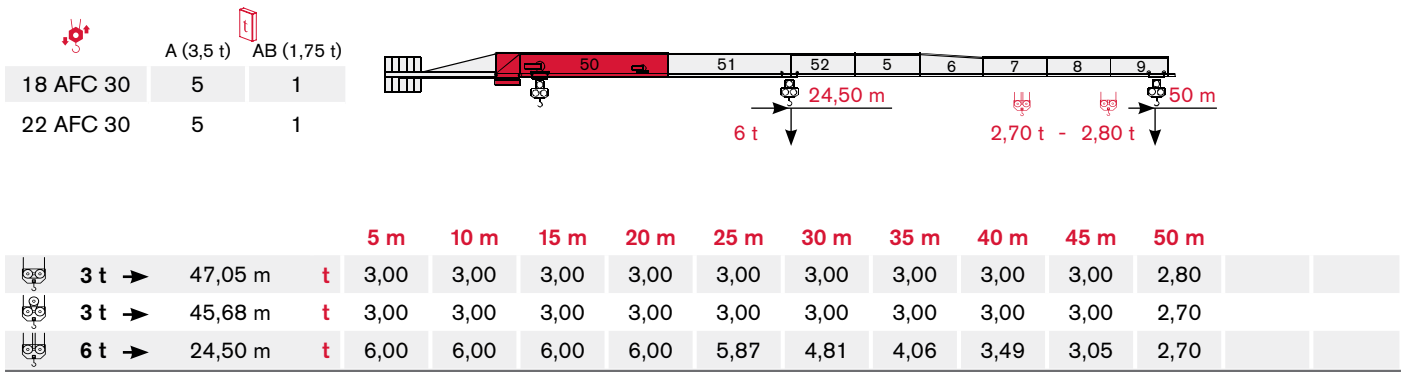
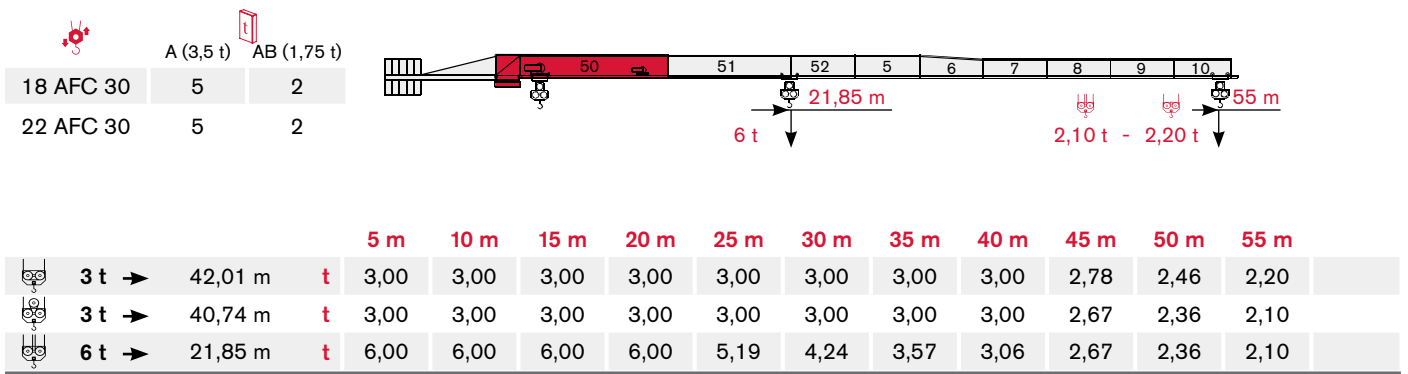
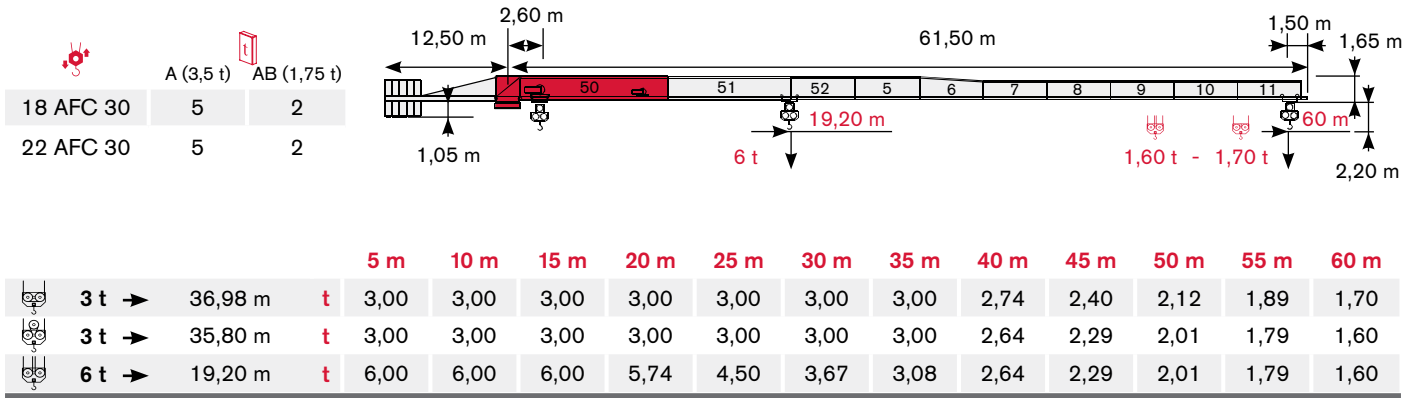
Indice · Inhalt · Contenu · Contenido · Sumário · Содержание

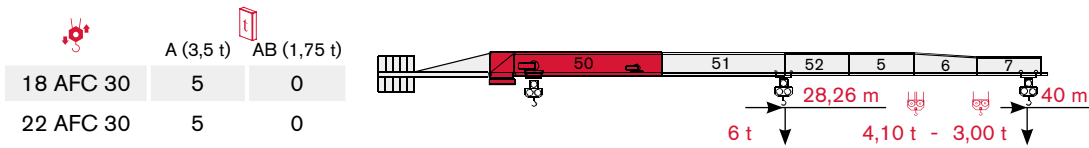
Page · Pagina · Seite · Page · Página · Página · Страница:

Load Diagram · Diagramma di portata · Lastkurven · Courbes de charges · Curvas de cargas · Diagrama de carga · Диаграмма грузоподъёмности .....	4
Tower · Torre · Turm · Tour · Torre · Torre · Башня .....	8
Mechanisms · Meccanismi · Antriebe · Mécanismes · Mecanismos · Mecanismo · Механизм .....	14
Transportation · Trasporto · Transport · Transport · Transporte · Transporte · Транспортировка .....	16

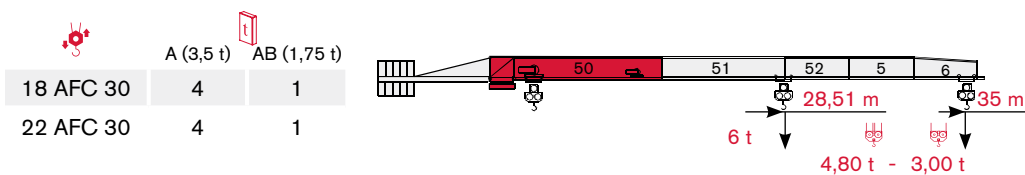
# LOAD DIAGRAM

Diagramma di portata · Lastkurven · Courbes de charges · Curvas de cargas · Diagrama de carga · Диаграмма грузоподъёмности

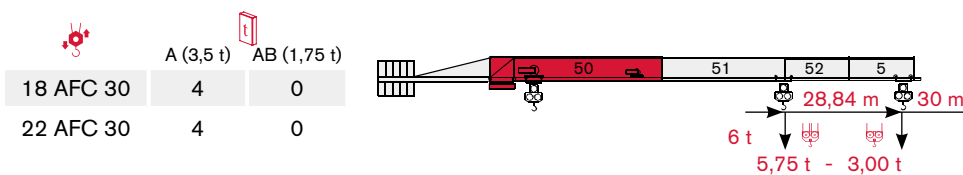




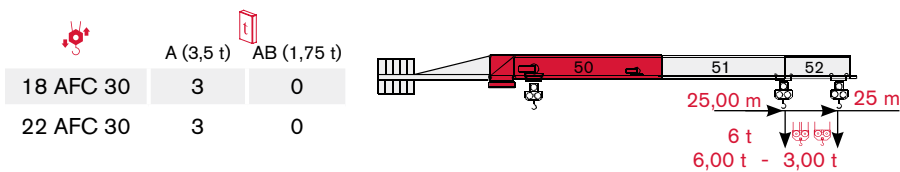
			5 m	10 m	15 m	20 m	25 m	30 m	35 m	40 m
	3 t →	40,00 m	t	3,00	3,00	3,00	3,00	3,00	3,00	3,00
	3 t →	40,00 m	t	3,00	3,00	3,00	3,00	3,00	3,00	3,00
	6 t →	28,26 m	t	6,00	6,00	6,00	6,00	6,00	5,62	4,75



			5 m	10 m	15 m	20 m	25 m	30 m	35 m
	3 t →	35,00 m	t	3,00	3,00	3,00	3,00	3,00	3,00
	3 t →	35,00 m	t	3,00	3,00	3,00	3,00	3,00	3,00
	6 t →	28,51 m	t	6,00	6,00	6,00	6,00	6,00	5,68



			5 m	10 m	15 m	20 m	25 m	30 m
	3 t →	30,00 m	t	3,00	3,00	3,00	3,00	3,00
	3 t →	30,00 m	t	3,00	3,00	3,00	3,00	3,00
	6 t →	28,84 m	t	6,00	6,00	6,00	6,00	5,75

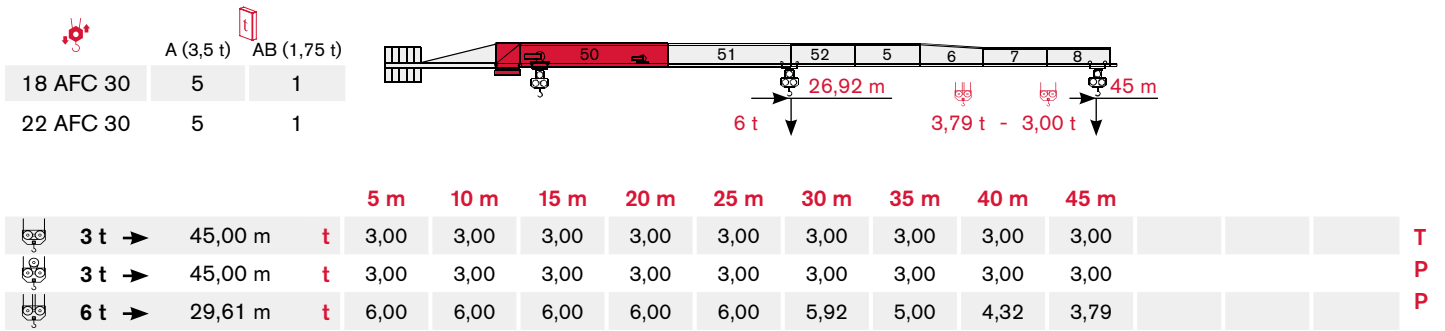
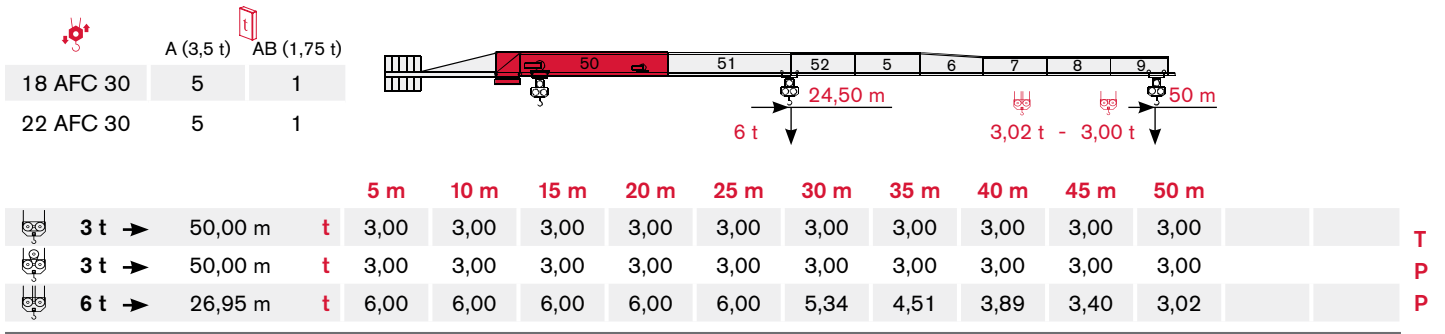
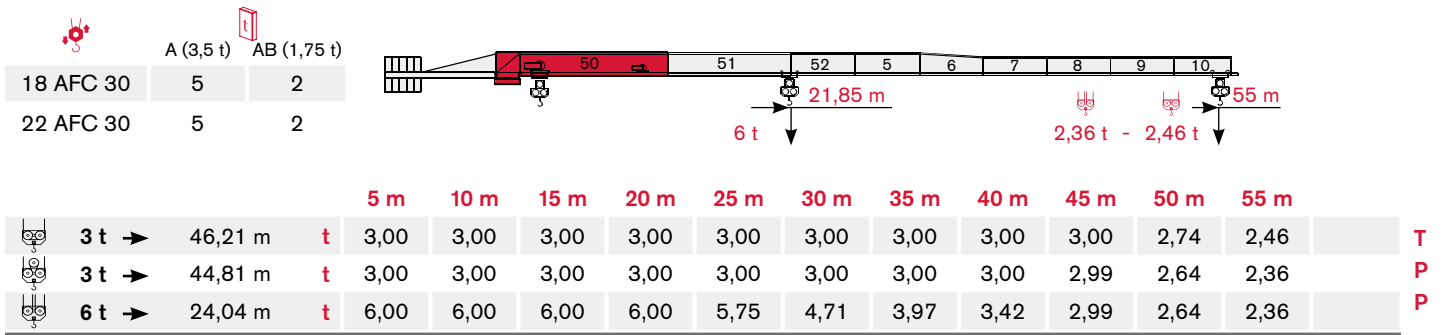
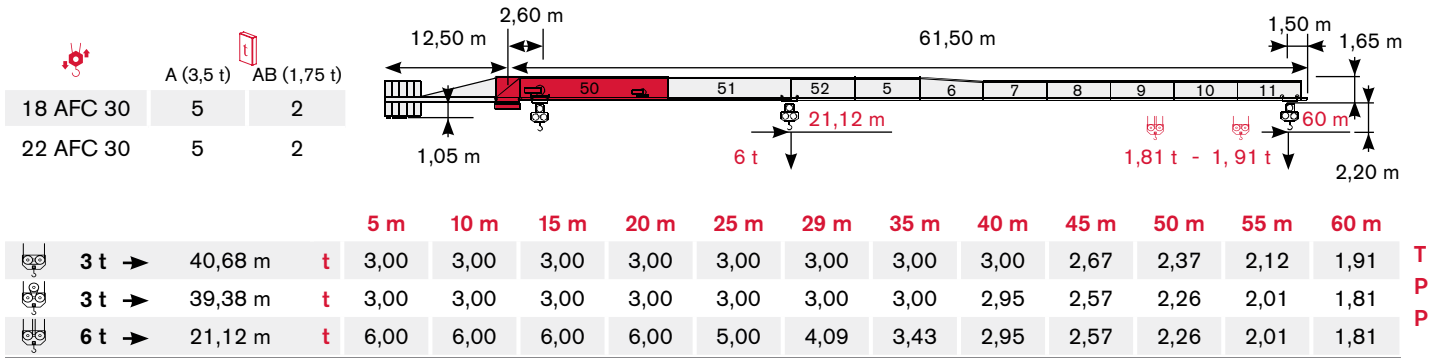


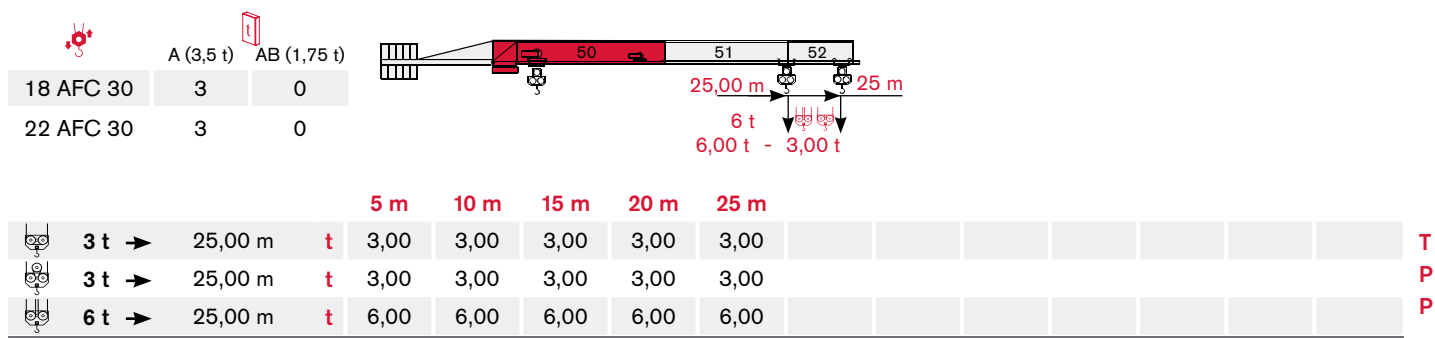
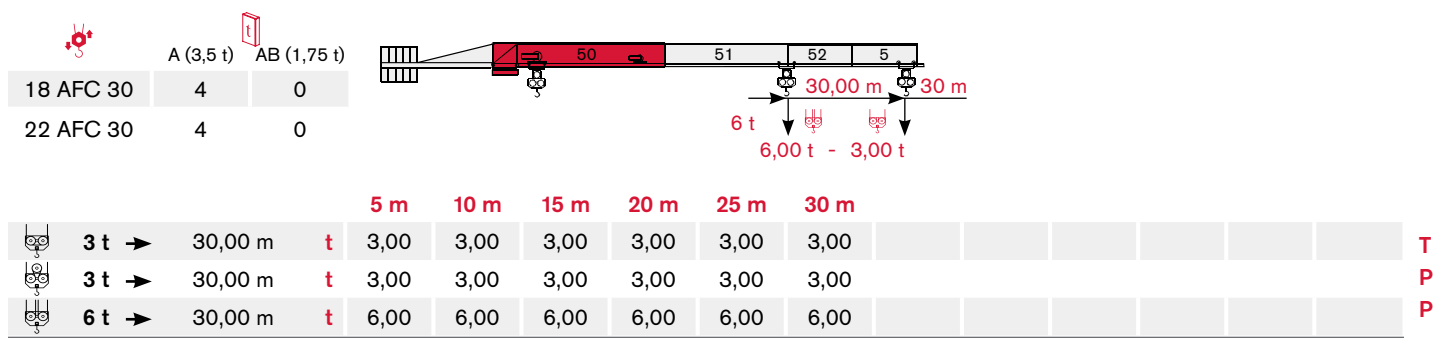
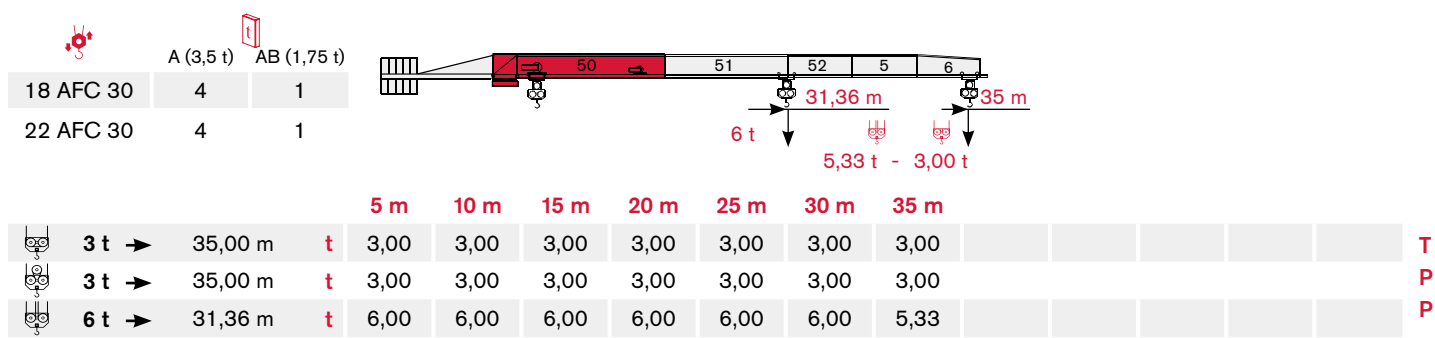
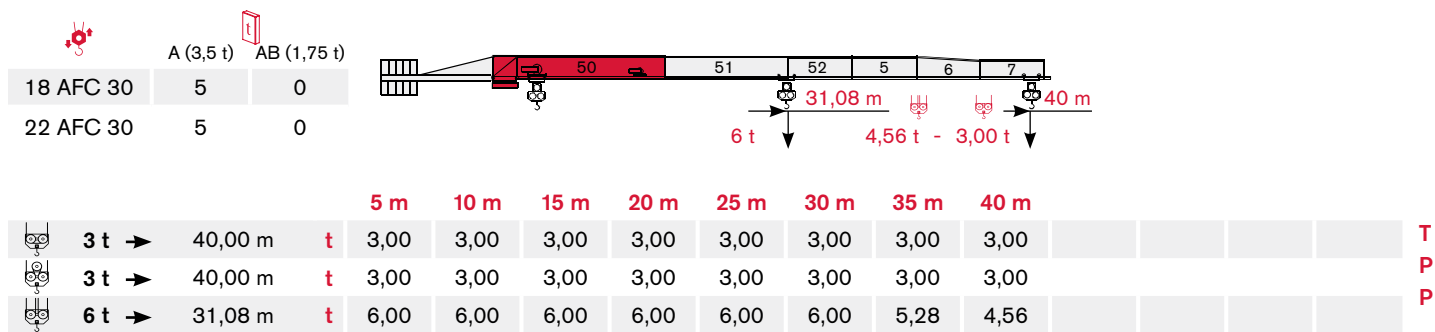
			5 m	10 m	15 m	20 m	25 m
	3 t →	25,00 m	t	3,00	3,00	3,00	3,00
	3 t →	25,00 m	t	3,00	3,00	3,00	3,00
	6 t →	25,00 m	t	6,00	6,00	6,00	6,00

# LOAD DIAGRAM

Diagramma di portata · Lastkurven · Courbes de charges · Curvas de cargas · Diagrama de carga · Диаграмма грузоподъёмности

## TEREX POWER PLUS





# TOWER

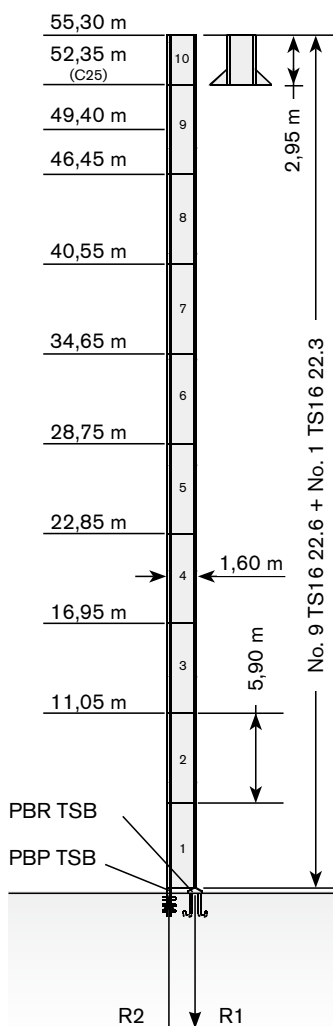
Torre · Turm · Tour · Torre · Torre · Башня

Standard Configurations · Installazioni Standard · Standardkonfiguration · Standard Implantations · Implantaciones Standard · Configuração padrão · Стандартная конфигурация крана

## TS16

Tower: TS16 & Basement: R1

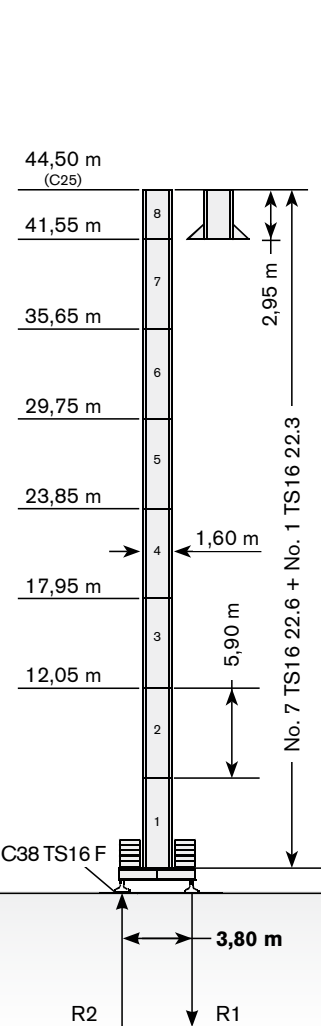
	●	◊
R1	-1410 kN	-1790 kN
R2	1080 kN	1550 kN
	355 kN	



	max. H (m)	
	FEM 1001	FEM 1005 C25
25->40 m	55,30	52,35
45->60 m	52,35	49,40

Tower: TS16 & Basement: F1

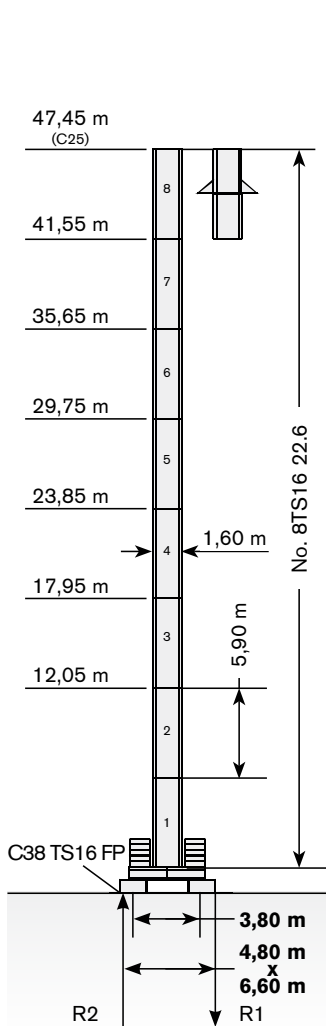
	●	◊
R1	-830 kN	-980 kN
R2	-70 kN	0 kN
	395 kN	



	max. H (m)	
	FEM 1001	FEM 1005 C25
25->40 m	44,50	44,50
45->60 m	44,50	44,50

Tower: TS16 & Basement: FP1

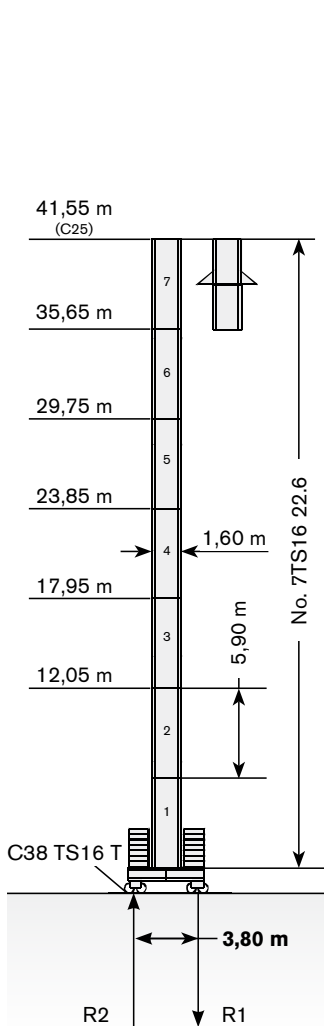
	●	◊
R1	-880 kN	-1060 kN
R2	-80 kN	0 kN
	405 kN	



	max. H (m)	
	FEM 1001	FEM 1005 C25
25->40 m	47,45	47,45
45->60 m	47,45	47,45

Tower: TS16 & Basement: T1

	●	◊
R1	-840 kN	-900 kN
R2	0 kN	0 kN
	385 kN	



	max. H (m)	
	FEM 1001	FEM 1005 C25
25->40 m	41,55	41,55
45->60 m	41,55	41,55

Max. under hook height · Altezza max. sotto gancio · Höchste Hakenhöhe · Hauteur maxi. sous crochet · Maxima altura bajo gancho · alt. máx. sob o gancho · макс высота крюка

Different heights and tower combinations are available; please consult us · Altezze diverse e combinazioni di torre sono disponibili; consultateci · Andere Höhen und Turmkombinationen auf Anfrage · Différentes hauteurs et combinaisons de tour sont disponibles; nous consulter · Hay diferentes alturas y combinaciones de torre disponibles. Consultémos · Diferentes alturas e combinações de torres disponíveis; fale conosco · Возможны другие сочетания высоты и конфигурации башни; проконсультируйтесь с нами Modular base chassis is also available; please consult us · E' anche disponibile il carro modulare; consultateci · Modulares Fundamentkreuz auf Anfrage · Châssis modifiable est disponible; nous consulter · La base modular está disponible. Consultémos · A base modular está disponível; fale conosco · модульная база доступна. проконсультируйтесь с нами.



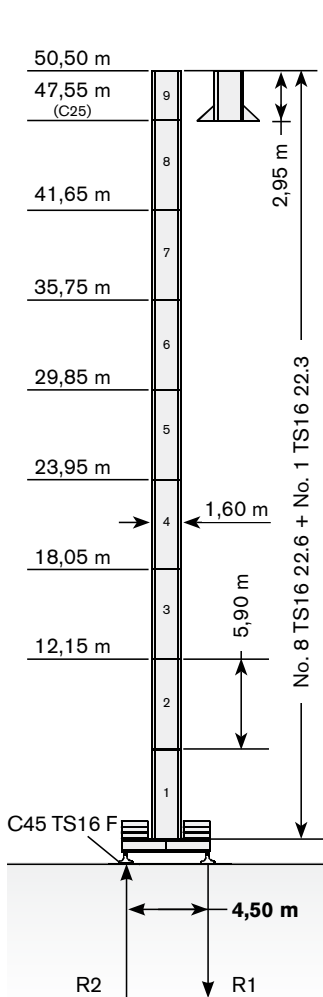


**Standard Configurations · Installazioni Standard · Standardkonfiguration · Standard Implantations · Implantaciones Standard · Configuração padrão · Стандартная конфигурация крана**

## TS16

**Tower: TS16 & Basement: F2**

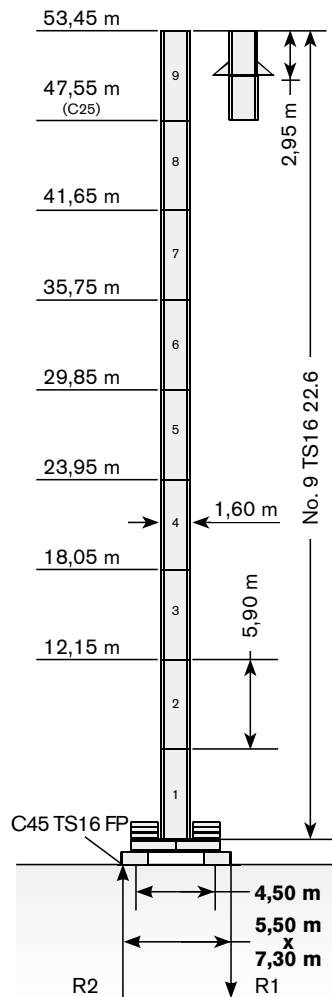
	●	◆
R1	-800 kN	-910 kN
R2	-80 kN	0 kN
	435 kN	



	max. H (m)	
	FEM 1001	FEM 1005 C25
25->40 m	50,50	47,55
45->60 m	50,50	47,55

**Tower: TS16 & Basement: FP2**

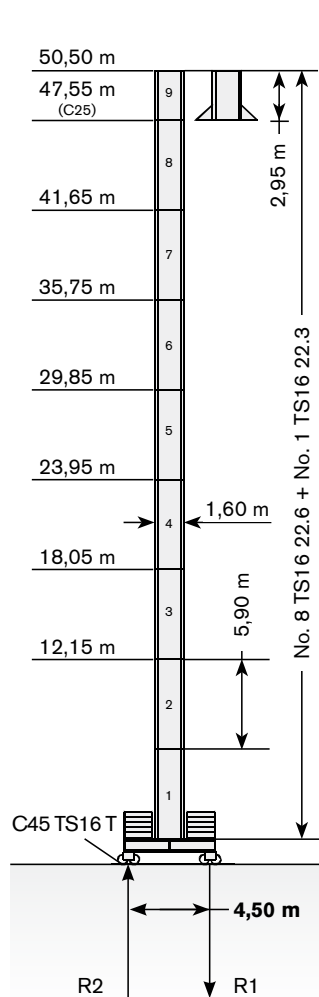
	●	◆
R1	-920 kN	-1030 kN
R2	0 kN	0 kN
	445 kN	



	max. H (m)	
	FEM 1001	FEM 1005 C25
25->40 m	53,45	47,55
45->60 m	50,50	47,55

**Tower: TS16 & Basement: T2**

	●	◆
R1	-870 kN	-910 kN
R2	0 kN	0 kN
	435 kN	



	max. H (m)	
	FEM 1001	FEM 1005 C25
25->40 m	50,50	47,55
45->60 m	50,50	47,55

TS16 22.3 TC tower section for Top Climbing ·

Prolunga TS16 22.3 TC sopraelevazione con gabbia di telescopaggio ·

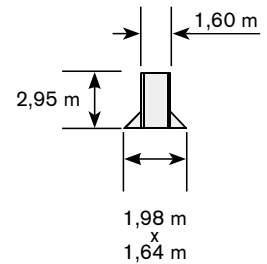
Turmelement TS16 22.3 TC für Turm-Erhöhung mit Kletterwerk ·

Pylône tour TS16 22.3 TC pour surélévation avec cage télescopique ·

Columna torre TS16 22.3 TC por sobreelevación con jaula ·

TS16 22.3 TC elemento de torre para telescopagem ·

S16 22.3 TC секция башни TC для унаращивания крана



The available lengths for the TS tower sections are 11.8 m, 5.9 m, 2.95 m. · Le prolunghe TS sono disponibili in lunghezze 11.8 m, 5.9 m, 2.95 m. · Die Turmschüsse TS sind mit Längen 11.8 m, 5.9 m, 2.95 m verfügbar. · Les éléments de mât TS sont disponibles en longueur 11.8 m, 5.9 m, 2.95 m. · Los tramos de torre TS son disponibles en las medidas de largo 11.8 m, 5.9 m, 2.95 m. · Os comprimentos disponíveis para elementos de torre TS são: 11.8m, 5.9m e 2.95m. · Длина поставляемых секций башни TS - 11.8 м, 5.9 м, 2.95 м.

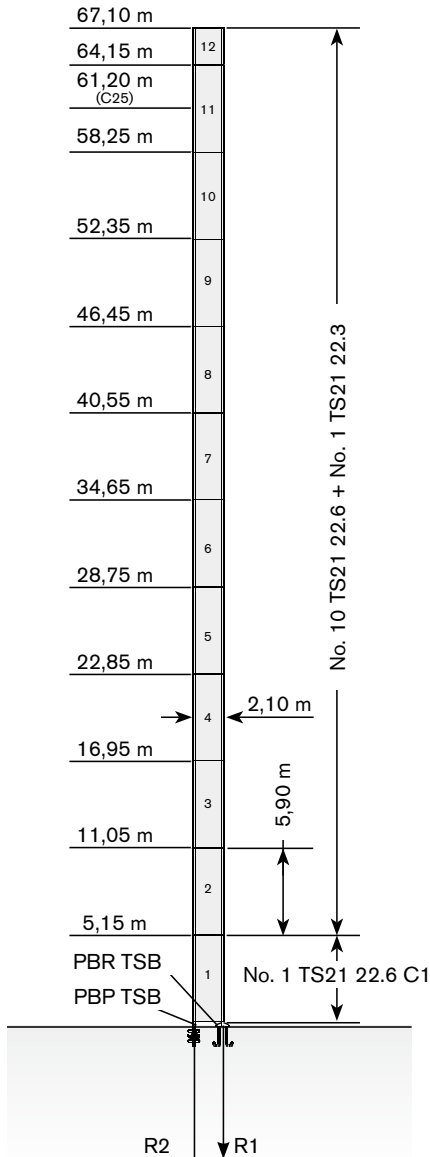
# TOWER

Torre · Turm · Tour · Torre · Torre · Башня  
 Standard Configurations · Installazioni Standard · Standardkonfiguration ·  
 Standard Implantations · Implantaciones Standard · Configuração padrão ·  
 Стандартная конфигурация крана

## TS21

Tower: TS21 & Basement: R2

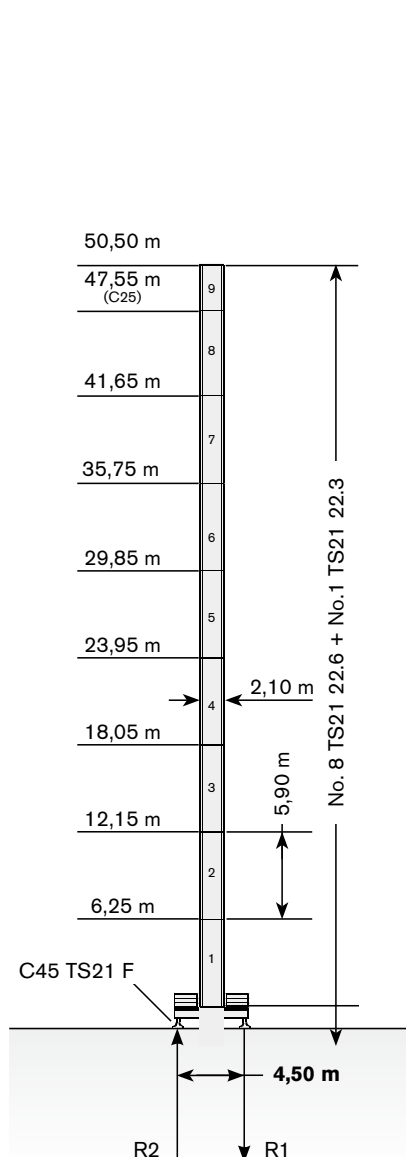
	●	◊
R1	-1240 kN	-2180 kN
R2	870 kN	1830 kN
	495 kN	



→	max. H (m)	
	FEM 1001	FEM 1005 C25
25-40 m	67,10	61,20
45-60 m	67,10	61,20

Tower: TS21 & Basement: F3

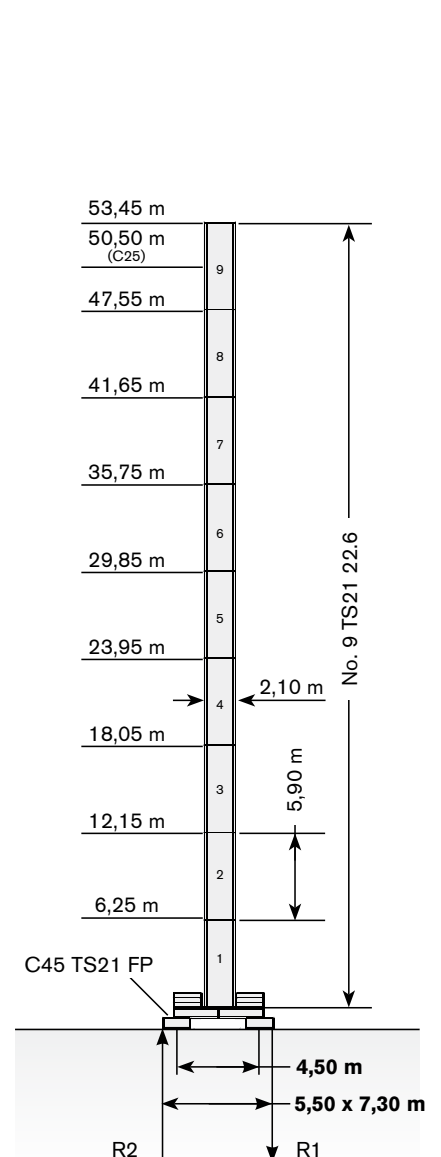
	●	◊
R1	-795 kN	-950 kN
R2	-115 kN	0 kN
	470 kN	



→	max. H (m)	
	FEM 1001	FEM 1005 C25
25-40 m	50,50	47,55
45-60 m	50,50	47,55

Tower: TS21 & Basement: FP3

	●	◊
R1	-855 kN	-1065 kN
R2	-140 kN	0 kN
	485 kN	




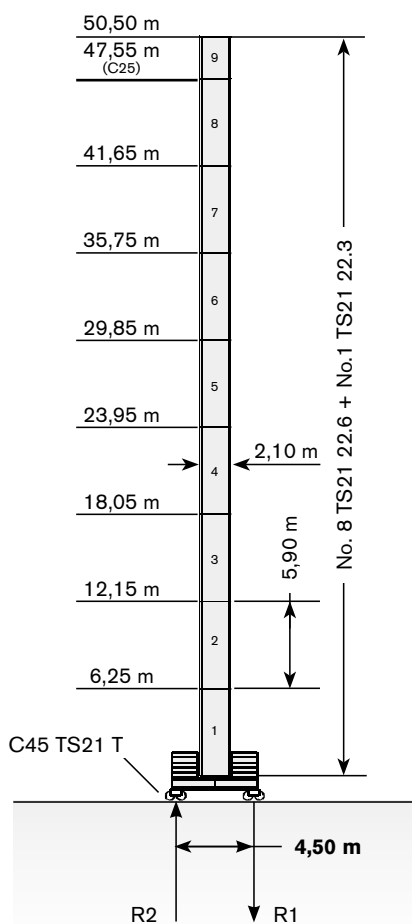
→	max. H (m)	
	FEM 1001	FEM 1005 C25
25-40 m	53,45	50,50
45-60 m	53,45	50,50


The available lengths for the TS tower sections are 11.8 m, 5.9 m, 2.95 m. · Le prolonghe TS sono disponibili in lunghezze 11.8 m, 5.9 m, 2.95 m. · Die Turmschüsse TS sind mit Längen 11.8 m, 5.9 m, 2.95 m verfügbar. · Les éléments de mât TS sont disponibles en longueur 11.8 m, 5.9 m, 2.95 m. · Los tramos de torre TS son disponibles en las medidas de largo 11.8 m, 5.9 m, 2.95 m. · Os comprimentos disponíveis para elementos de torre TS são: 11.8m, 5.9m e 2.95m. · Длина поставляемых секций башни TS - 11.8 m, 5.9 m, 2.95 m.

Modular base chassis is also available; please consult us · E' anche disponibile il carro modulare; consultateci · Modulares Fundamentkreuz auf Anfrage · Châssis modifiable est disponible; nous consulter · La base modular está disponible. Consultémos · A base modular está disponível; fale conosco · модульная база доступна. оконсультируйтесь с нами


## Tower: TS21 & Basement: T3

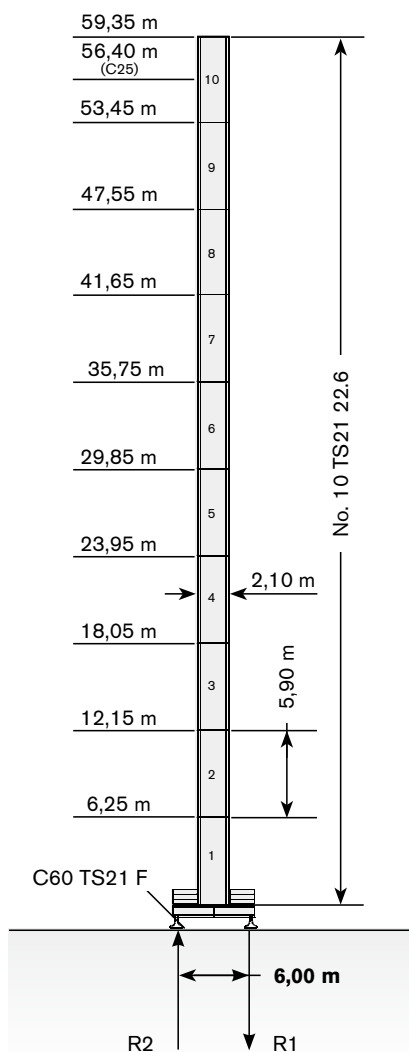
	●	◊
<b>R1</b>	-865 kN	-950 kN
<b>R2</b>	-40 kN	0 kN
	470 kN	




	max. H (m)	
→ 	FEM 1001	FEM 1005 C25
25-40 m	50,50	47,55
45-60 m	50,50	47,55


## Tower: TS21 & Basement: F4

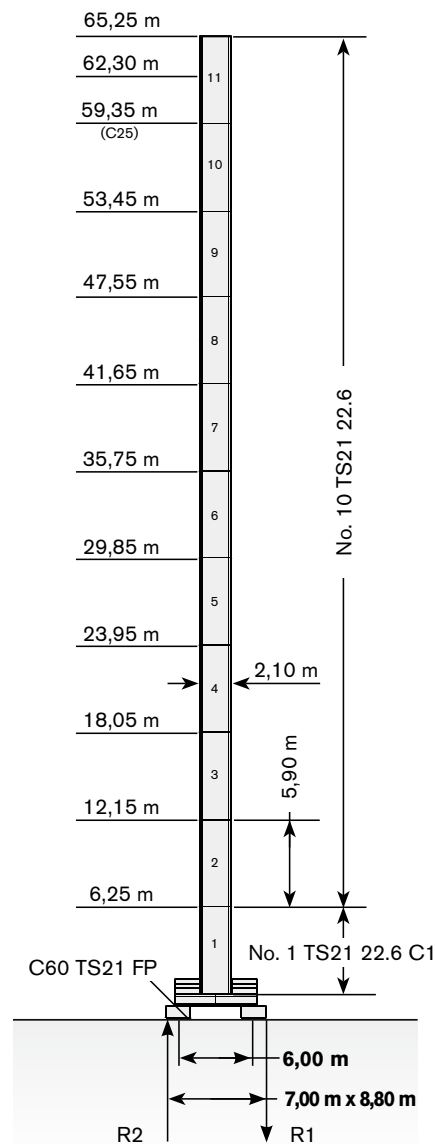
	●	◊
<b>R1</b>	-725 kN	-990 kN
<b>R2</b>	-125 kN	0 kN
	545 kN	




	max. H (m)	
→ 	FEM 1001	FEM 1005 C25
25-40 m	59,35	56,40
45-60 m	59,35	56,40

## Tower: TS21 & Basement: FP4

	●	◊
<b>R1</b>	-820 kN	-1200 kN
<b>R2</b>	-155 kN	0 kN
	565 kN	



	max. H (m)	
→ 	FEM 1001	FEM 1005 C25
25-40 m	62,30	59,35
45-60 m	65,25	59,35

Max. under hook height · Altezza max. sotto gancio · Höchste Hakenhöhe · Hauteur maxi. sous crochet · Maxima altura bajo gancho · alt. máx. sob o gancho · макс высота крюка

Different heights and tower combinations are available; please consult us · Altezze diverse e combinazioni di torre sono disponibili; consultateci · Andere Höhen und Turmkombinationen auf Anfrage · Différentes hauteurs et combinaisons de tour sont disponibles; nous consulter · Hay diferentes alturas y combinaciones de torre disponibles. Consultémos · Diferentes alturas e combinações de torres disponíveis; fale conosco · Возможны другие сочетания высоты и конфигурации башни; проконсультируйтесь с нами


# TOWER

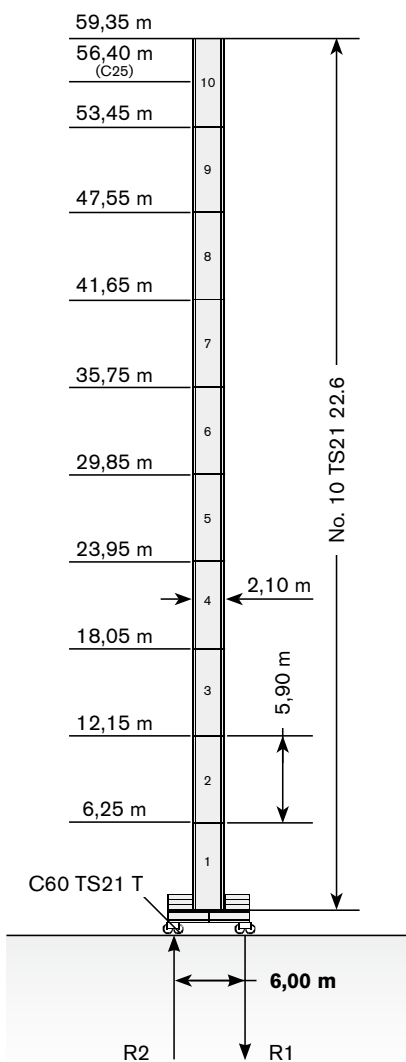
Torre · Turm · Tour · Torre · Torre · Башня

Standard Configurations · Installazioni Standard · Standardkonfiguration · Standard Implantations · Implantaciones Standard · Configuração padrão · Стандартная конфигурация крана

## TS21

Tower: TS21 & Basement: T4

	●	◊
R1	-785 kN	-990 kN
R2	-65 kN	0 kN
	545 kN	



→	max. H (m)	
	FEM 1001	FEM 1005 C25
25-40 m	59,53	56,40
45-60 m	59,53	56,40

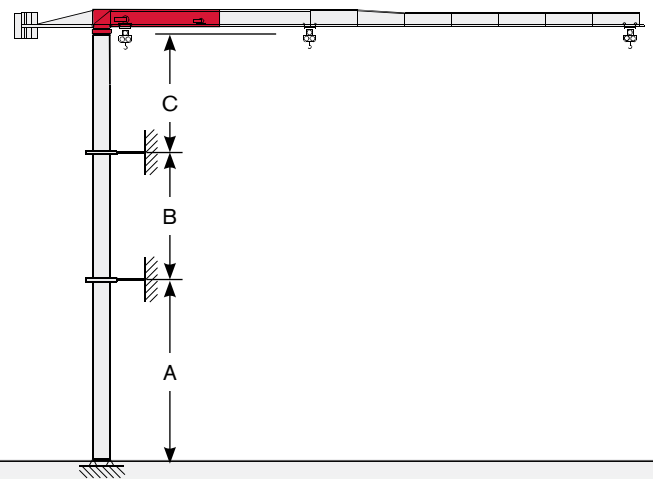
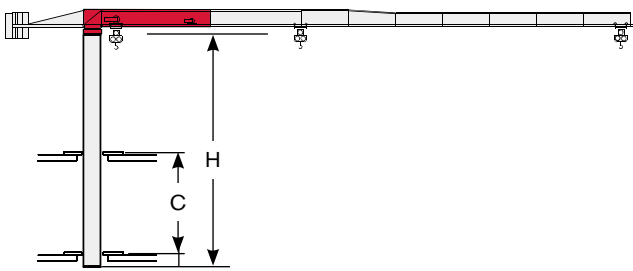
The available lengths for the TS tower sections are 11.8 m, 5.9 m, 2.95 m. · Le prolunghie TS sono disponibili in lunghezze 11.8 m, 5.9 m, 2.95 m. · Die Turmschüsse TS sind mit Längen 11.8 m, 5.9 m, 2.95 m verfügbar. · Les éléments de mât TS sont disponibles en longueur 11.8 m, 5.9 m, 2.95 m. · Los tramos de torre TS son disponibles en las medidas de largo 11.8 m, 5.9 m, 2.95 m. · Os comprimentos disponíveis para elementos de torre TS são: 11.8m, 5.9m e 2.95m. · Длина поставляемых секций башни TS - 11.8 m, 5.9 m, 2.95 m. Modular base chassis is also available; please consult us · E' anche disponibile il carro modulare; consultateci · Modulares Fundamentkreuz auf Anfrage · Châssis modifiable est disponible; nous consulter · La base modular está disponible. Consultenos · A base modular está disponível; fale conosco · модульная база доступна. проконсультируйтесь с нами

Torre · Turm · Tour · Torre · Torre · Башня

Other configurations · Altre Installazioni · Aufstellmöglichkeiten · Autres Implantations · Otras Implantaciones · Outras configurações · Другие конфигурации

Bottom climbing crane · Gru climbing · Kletterkran im Gebäude · Téléscopage sur dalles · Telescopage grúa trepadora · Guindaste automontante interno · Самоподъемный кран

Crane tied to the structure · Gru ancorata · Geankerter Kran · Grue ancrée · Grúa anclada · Guindaste ancorado na estrutura · Кран, крепящийся к сооружению



**Tower: TS16**

Jib	C min/max (m)	H min/max (m)
all	11/13	29,5/44,25

**Tower: TS21**

Jib	C min/max (m)	H min/max (m)
all	11/14	29,5/44,25

**Tower: TS16 (FEM 1001)**

Jib	A min/max (m)	B min/max (m)	C max (m)
25 - 40	40/47	17,7/23,6	28
45 - 60	37/44	17,7/23,6	28

**Tower: TS16 (FEM 1005 C25 H=200 m)**

Jib	A min/max (m)	B min/max (m)	C max (m)
25 - 40	40/47	17,7/23,6	28
45 - 60	37/44	17,7/23,6	28

**Tower: TS21 (FEM 1001)**

Jib	A min/max (m)	B min/max (m)	C max (m)
all	40/46	17,7/23,6	35

**Tower: TS21 (FEM 1005 C25 H=200 m)**

Jib	A min/max (m)	B min/max (m)	C max (m)
all	40/46	17,7/23,6	32








Different heights and tower combinations are available; please consult us · Altezze diverse e combinazioni di torre sono disponibili; consultateci · Andere Höhen und Turmkombinationen auf Anfrage · Différentes hauteurs et combinaisons de tour sont disponibles; nous consulter · Hay diferentes alturas y combinaciones de torre disponibles. Consultémos · Diferentes alturas e combinações de torres disponíveis; fale conosco · Возможны другие сочетания высоты и конфигурации башни; проконсультируйтесь с нами

# MECHANISMS




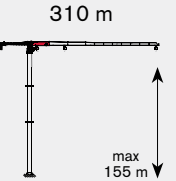

Meccanismi · Antriebe · Mécanismes · Mecanismos · Mecanismo · Механизм




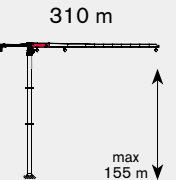

Power supply · Alimentazione · Stromversorgung · Alimentation · Suministro eléctrico · Requisitos de energia · Требования по питанию

				
	18 AFC 30	24* → 43 kVA	400V - 50Hz / 460V - 60Hz	2000/14/CE modificata
	22 AFC 30	24* → 45 kVA	400V - 50Hz / 460V - 60Hz	2000/14/CE modificata

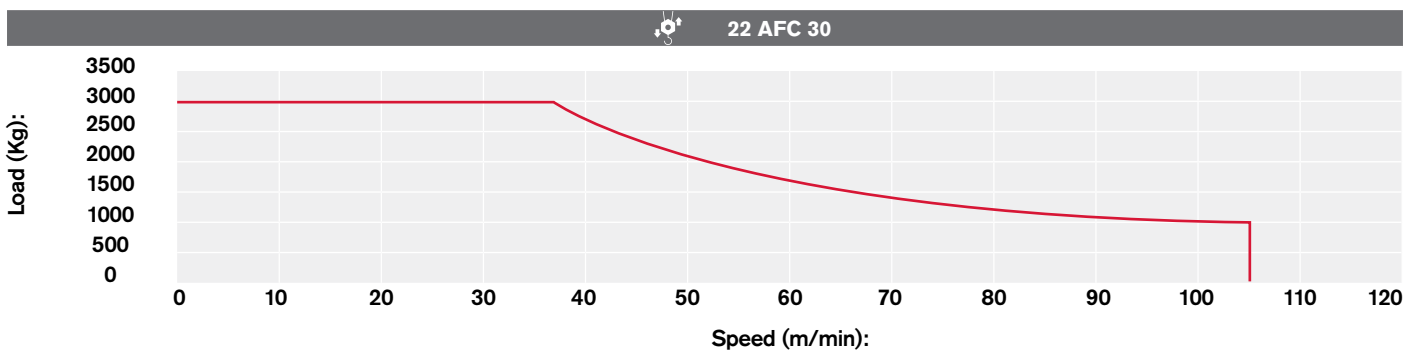
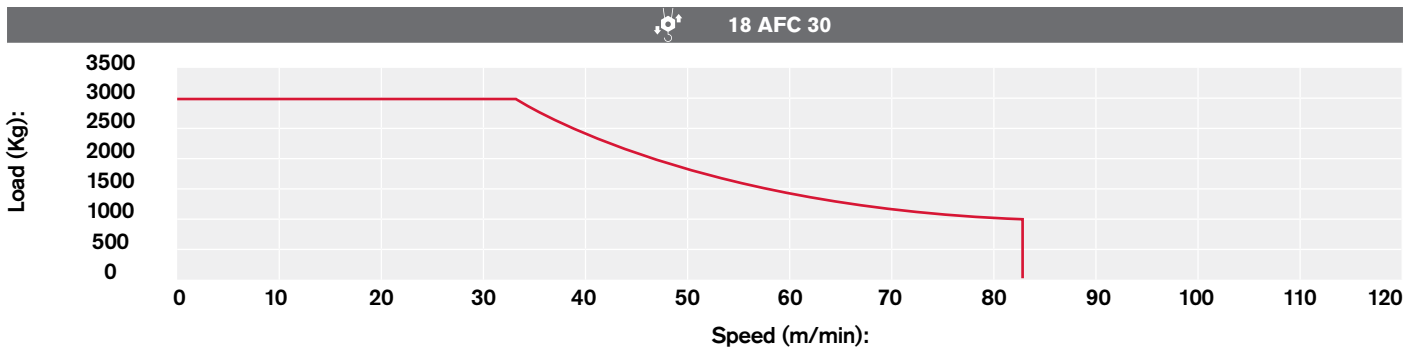
\* - kVA \*

Hoisting · Sollevamento · Heben · Levage · Elevación · Elevação · Подъем

			t	m/min	kW	
	18 AFC 30		3	0 → 32	18	
			2	0 → 45		
			1,5	0 → 59		
			1,25	0 → 68		
			1	0 → 82		
			6	0 → 16		
			4	0 → 23		
			3	0 → 29		
			2,5	0 → 34		
			2	0 → 4		

			t	m/min	kW	
	22 AFC 30		3	0 → 38	22	
			2,5	0 → 46		
			2	0 → 46		
			1,5	0 → 72		
			1	0 → 104		
			6	0 → 19		
			5	0 → 23		
			4	0 → 28		
			3	0 → 36		
			2	0 → 52		

Hoisting Speed · Velocità di Sollevamento · Heben Geschwindigkeit · Vitesse de Levage · Velocidad de Elevación · Velocidade de içamento · Скорость подъема



Additional Specifications · Altre movimentazioni · Weitere Leistungsdaten · Spécifications additionnelles · Otras prestaciones · Especificações adicionais · Дополнительные спецификации

	DVF 3 4 D8	0 → 6 → 30 → 70 m/min	4 kW
	SVF 2 2 6	0,7 r.p.m.	2 x 5,5 kW
	TAD 2RP 2M3	0 → 24 m/min (50Hz) 0 → 29 m/min (60Hz)	2 x 3 kW
	TAD 2RG 4M3	0 → 24 m/min (50Hz) 0 → 29 m/min (60Hz)	4 x 3 kW
	<b>i</b>		

Tower height max. TS16

		T1	T2
	TAD 2RP 2M3	29,75 m	35,65 m
	TAD 2RG 4M3	> 29,75 m	> 35,65 m

Tower height max. TS21

		T3	T4
	TAD 2RP 2M4	35,75 m	35,75 m
	TAD 2RG 4M3	> 35,75 m	> 35,75 m

# TRANSPORTATION

Trasporto · Transport · Transport · Transporte · Transporte · Транспортировка

## Packing list










### Undercarriage

CTT 152-6	DESCRIPTION · DESCRIZIONE · BESCHREIBUNG · DESCRIPTION · DESCRIPCIÓN · DESCRIÇÃO · ОПИСАНИЕ	LENGTH · LUNGHEZZA · LÄNGE · LONGUEUR · LONGITUD · COMPRIMENTO · ДЛИНА	WIDTH · LARGHEZZA · BREITE · LARGEUR · ANCHURA · LARGURA · ШИРИНА	HEIGHT · ALTEZZA · HÖHE · HAUTEUR · ALTURA · ALTURA · ВЫСОТА	QUANTITY · QUANTITÀ · MENGE · QUANTITÉ · CANTIDAD · QUANTIDADE · КОЛИЧЕСТВО	WEIGHT · PESO · GEWICHT · POIDS · PESO · ПЕСО · ВЕС
	"A" BEAM FOR C38 UNDERCARRIAGE TS16	5,80 m	0,41 m	0,80 m	1	2095 kg
	"B" BEAM FOR C38 UNDERCARRIAGE TS16	5,80 m	0,75 m	0,70 m	1	2060 kg
	CROSSBEAM FOR C38 UNDERCARRIAGE	3,70 m	0,11 m	0,40 m	2	190 kg
	"A" BEAM C45 UNDERCARRIAGE TS21-TS16	6,80 m	0,40 m	1,00 m	1	2820 kg
	"B" BEAM C45 UNDERCARRIAGE TS21-TS16	6,80 m	0,75 m	0,80 m	1	2620 kg
	CROSSBEAM FOR C45 UNDERCARRIAGE TS21-TS16	4,40 m	0,12 m	0,54 m	2	230 kg
	CROSSBEAM FOR UNDERCARRIAGE C60	5,90 m	0,60 m	0,20 m	2	450 kg
	"A" BEAM FOR UNDERCARRIAGE C60	8,90 m	0,40 m	1,10 m	1	3600 kg
	"B" BEAM FOR UNDERCARRIAGE C60	8,90 m	0,70 m	0,90 m	1	3600 kg

\* Inclusive of ladder, ladder support and protection, platform



## Tower

CTT 152-6	DESCRIPTION · DESCRIZIONE · BESCHREIBUNG · DESCRIPTION · DESCRIPCIÓN · DESCRIÇÃO · ОПИСАНИЕ	LENGTH · LUNGHEZZA · LÄNGE · LONGUEUR · LONGITUD · COMPRIENTO · ДЛИНА	WIDTH · LARGHEZZA · BREITE · LARGEUR · ANCHURA · LARGURA · ШИРИНА	HEIGHT · ALTEZZA · HÖHE · HAUTEUR · ALTURA · ALTEURA · ВЫСОТА	QUANTITY · QUANTITÀ · MENGE · QUANTITÉ · CANTIDAD · QUANTIDADE · КОЛИЧЕСТВО	WEIGHT · PESO · GEWICHT · POIDS · PESO · PESO · ВЕС
	TS16 22.3 TOWER SECTION	1,60 m	1,60 m	2,98 m	1	1305 kg*
	TS16 22.6 TOWER SECTION	1,60 m	1,60 m	5,93 m	1	2292 kg*
	TS16 22.12	1,60 m	1,60 m	11,83 m	1	4347 kg*
	TS16 22.3 TC TOP CLIMBING UNIT TOWER SECTION MOUNT	2,50 m	2,00 m	2,95 m	1	1893 kg*
	TS21 22.6 TOWER SECTION	2,10 m	2,10 m	5,93 m	1	2550 kg*
	TS21 22.6 C1 TOWER SECTION	2,10 m	2,10 m	5,93 m	1	2800 kg*
	TS21 22.3 TOWER SECTION	2,10 m	2,10 m	2,98 m	1	1382 kg*
	TS21 22.12 TOWER SECTION	2,07 m	2,10 m	11,80 m	1	4825 kg*
	TS21 22.3 TC TOP CLIMBING UNIT TOWER SECTION MOUNT	3,00 m	2,50 m	2,95 m	1	2050 kg*

\* Inclusive of ladder, ladder support and protection, platform














# TRANSPORTATION

Trasporto · Transport · Transport · Transporte · Transporte · Транспортировка

## Cab

CTT 152-6	DESCRIPTION · DESCRIZIONE · BESCHREIBUNG · DESCRIPTION · DESCRIPCIÓN · DESCRIÇÃO · ОПИСАНИЕ	LENGTH · LUNGHEZZA · LÄNGE · LONGUEUR · LONGITUD · COMPRIMENTO · ДЛИНА	WIDTH · LARGHEZZA · BREITE · LARGEUR · ANCHURA · LARGURA · ШИРИНА	HEIGHT · ALTEZZA · HÖHE · HAUTEUR · ALTURA · ALTURA · ВЫСОТА	QUANTITY · QUANTITÀ · MENGE · QUANTITÉ · · CANTIDAD · QUANTIDADE · КОЛИЧЕСТВО	WEIGHT · PESO · GEWICHT · POIDS · PESO · PESO · ВЕС
	CAB UNIT PLATFORM	3,00 m	2,30 m	3,70 m	1	1500 kg

## Upper Part



	SLEWING UNIT TS16	2,20 m	2,20 m	2,70 m	1	4810 kg
	SLEWING UNIT TS21	2,20 m	2,49 m	2,70 m	1	5060 kg
	JIB SECTION 50	11,00 m	2,00 m	2,10 m	1	3690 kg
	JIB SECTION 51	10,00 m	1,11 m	1,86 m	1	1545 kg
	JIB SECTION 52	5,00 m	1,11 m	1,82 m	1	642 kg
	JIB SECTION-5	5,20 m	1,11 m	1,80 m	1	550 kg
	JIB SECTION-6	5,20 m	1,11 m	1,80 m	1	525 kg
	JIB SECTION-7	5,20 m	1,11 m	1,30 m	1	457 kg
	JIB SECTION-8	5,20 m	1,11 m	1,30 m	1	425 kg
	JIB SECTION-9	5,20 m	1,11 m	1,30 m	1	310 kg
	JIB SECTION-10	5,20 m	1,11 m	1,30 m	1	285 kg
	JIB SECTION-11	5,20 m	1,11 m	1,30 m	1	235 kg
	JIB TIP	1,20 m	0,70 m	1,10 m	1	49 kg

# TRANSPORTATION

**CTT 152-6**

**Trasporto · Transport · Transport · Transporte · Transporte · Транспортировка**

## Upper Part

CTT 152-6	DESCRIPTION · DESCRIZIONE · BESCHREIBUNG · DESCRIPTION · DESCRIPCIÓN · DESCRIÇÃO · ОПИСАНИЕ	LENGTH · LUNGHEZZA · LÄNGE · LONGUEUR · LONGITUD · COMPRIMENTO · ДЛИНА	WIDTH · LARGHEZZA · BREITE · LARGEUR · ANCHURA · LARGURA · ШИРИНА	HEIGHT · ALTEZZA · HÖHE · HAUTEUR · ALTURA · ALTURA · ВЫСОТА	QUANTITY · QUANTITÀ · MENGE · QUANTITÉ · CANTIDAD · QUANTIDADE · КОЛИЧЕСТВО	WEIGHT · PESO · GEWICHT · POIDS · PESO · ВЕС
	COUNTERJIB COMPLETE	11,60 m	1,40 m	0,56 m	1	2790 kg
	QEG GENERAL ELECTRICAL BOX PLATFORM	2,10 m	1,50 m	1,80 m	1	630 kg

# TEREX TOWER CRANES

## Gru Comedil Srl

Via delle Innovazioni, 17  
33074 Fontanafredda (PN)  
Italy  
Ph: +39 0434 989111  
Email: mktg.cranes@terex.com

February 2024. Product specifications and prices are subject to change without notice or obligation. The photographs and/or drawings in this document are for illustrative purposes only. Refer to the appropriate Operator's Manual for instructions on the proper use of this equipment. Failure to follow the corresponding Operator's Manual when using our equipment or to otherwise act responsibly may result in serious injury or death. The only warranty applicable to our equipment is the standard written warranty applicable to the particular product and sale and Terex makes no other warranty, express or implied. Products and services listed may be trademarks, service marks or trade-names of Terex Corporation and/or its subsidiaries in the USA and other countries. All rights are reserved. Terex, the Terex Crown design and Works For You are trademarks of Terex Corporation or its subsidiaries.

Febbraio 2024. Specifiche e prezzi dei prodotti sono soggetti a modifica senza preavviso o altro obbligo. Le fotografie e i disegni in questo documento hanno esclusivamente scopo illustrativo. Consulta il Manuale dell'operatore pertinente per trovare istruzioni per l'utilizzo corretto di questo macchinario. La mancata osservanza delle istruzioni contenute nel relativo Manuale dell'operatore durante l'uso del macchinario e altri comportamenti irresponsabili possono provocare gravi lesioni, anche mortali. L'unica garanzia applicabile ai nostri macchinari è la garanzia scritta standard applicabile al particolare prodotto e alla particolare vendita e Terex è esonerata dal fornire qualsiasi altra garanzia, esplicita o implicita. I prodotti e servizi elencati possono essere dei marchi di fabbrica, marchi di servizio o nomi commerciali di Terex Corporation, e/o delle rispettive società affiliate negli Stati Uniti d'America e in molte altre nazioni. Tutti i diritti riservati. Terex, il marchio Terex Crown e Works for You sono marchi di proprietà di Terex Corporation o delle sue società affiliate.

Februar 2024. Irrtum und Änderungen der Produktspezifikationen vorbehalten. Die in diesem Dokument enthaltenen Fotos und/oder Zeichnungen dienen rein anschaulichen Zwecken. Für den sachgemäßen Gebrauch der Maschinen ist das entsprechende Bedienerhandbuch heranzuziehen. Unsachgemäßer Umgang mit bzw. unsachgemäßer Einsatz unserer Maschinen kann zu schweren gesundheitlichen Schäden bis hin zum Tod führen. Für unsere Produkte wird ausschließlich die entsprechende, schriftlich niedergelegte Standardgarantie gewährt. Terex leistet keinerlei darüber hinausgehende Garantie, weder ausdrücklich noch stillschweigend. Die genannten Produkte und Dienstleistungen sind in den USA und anderen Ländern ggf. Marken, Dienstleistungsmarken oder Handelsnamen der Terex Corporation und/oder ihrer Tochtergesellschaften. Alle Rechte vorbehalten. Terex, das Terex Kronenlogo und Works For You sind Marken in Eigentum der Terex Corporation bzw. ihrer Tochtergesellschaften.

Février 2024. Les caractéristiques et prix des produits peuvent faire l'objet de modifications sans notification préalable. Les photographies ou dessins présentés dans ce document servent uniquement à des fins d'illustration. Pour connaître les instructions relatives à l'utilisation correcte de cet équipement, veuillez vous référer au manuel de l'utilisateur correspondant. Le non-respect du manuel d'utilisateur correspondant lors de l'utilisation de notre équipement ou des actes irresponsables risquent de provoquer de graves blessures, voire un décès. La seule garantie applicable à nos équipements est la garantie écrite standard applicable au produit et à la vente spécifiques. Terex ne délivre aucune autre garantie, expresse ou implicite. Les produits et les services mentionnés peuvent être des marques, des marques de service ou des appellations commerciales de Terex Corporation et/ou de ses filiales aux États-Unis et dans d'autres pays. Tous droits réservés. Terex, le design Terex Crown et Works For You sont des marques déposées de Terex Corporation ou de ses filiales.

Febrero 2024. Las especificaciones y los precios de los productos están sujetos a cambios sin necesidad de previo aviso ni ninguna otra obligación. Las fotografías y/o dibujos de este documento tienen un fin meramente ilustrativo. Consulte el correspondiente manual de instrucciones del operario para obtener más información sobre el uso correcto de esta maquinaria. No respetar el manual del operario al utilizar la maquinaria o actuar de forma irresponsable puede provocar lesiones graves e incluso mortales. La única garantía aplicable a nuestra maquinaria es la garantía escrita estándar de cada producto y venta. Terex no amplía dicha garantía de forma expresa ni implícita. Los productos y servicios mencionados pueden ser marcas comerciales, marcas de servicio o nombres de marca de Terex Corporation o de alguna de sus filiales en Estados Unidos y otros países. Todos los derechos reservados. Terex, el diseño de la corona Terex y Works For You son marcas registradas de Terex Corporation o de sus filiales.

Fevereiro de 2024. Especificações e preços dos produtos sujeitos a alteração sem aviso prévio ou obrigações. As fotografias e/ou desenhos neste documento são apenas para fins ilustrativos. Consulte o respectivo Manual do Operador para instruções sobre o uso correto deste equipamento. Deixar de acompanhar o respectivo Manual do Operador ao usar o nosso equipamento ou, por qualquer outra forma, deixar de agir de maneira responsável pode resultar em lesões corporais graves ou a morte. A única garantia aplicável ao nosso equipamento é a garantia padrão por escrito correspondente ao produto específico vendido. A Terex não dá outras garantias, expressas ou implícitas. Os produtos e serviços listados podem ser marcas comerciais, marcas de serviço ou nomes-fantasia da Terex Corporation e/ou suas subsidiárias nos EUA e em outros países. Todos os direitos reservados. Terex, o desenho da Coroa Terex e a expressão Works For You são marcas comerciais da Terex Corporation ou suas subsidiárias.

февраль 2024 г. года Технические характеристики и цены могут изменяться без предварительного уведомления и без каких-либо обязательств для производителя. Фотографии и (или) чертежи в настоящем документе служат только в качестве иллюстраций. Инструкции по надлежащей эксплуатации данного оборудования см. в соответствующем руководстве для оператора. Невыполнение указаний соответствующих руководств для оператора при эксплуатации оборудования или другие безответственные действия могут повлечь серьезные травмы или смерть. Единственной гарантией, действующей в отношении нашего оборудования, является стандартная форма письменной гарантии на данный тип оборудования и на условия его продажи. Terex не дает никаких других гарантий: ни ясно выраженных, ни подразумеваемых. Перечисленные продукты и услуги могут быть торговыми марками, знаками обслуживания или торговыми наименованиями Terex Corporation и / или ее дочерних компаний в США и других странах. Все права защищены. Terex, изображение короны Terex и Works for You являются торговыми марками, принадлежащими корпорации Terex или ее дочерним компаниям.



[www.terex.com/tower-cranes](http://www.terex.com/tower-cranes)

Brochure Reference: TC-DS-M-E/I/G/F/S/P/R-CTT152-6-02/24



**WORKS FOR YOU.™**